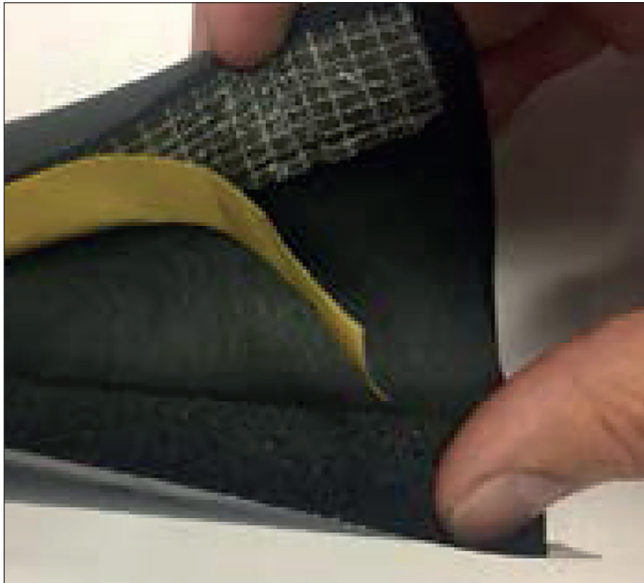




## PRE-SLIT WEATHERPROOF INSULATION



Our new pre-slit PVC coated insulation provides outstanding protection against freezing, for external boiler condensate pipework. This new design offers a quick and secure 'tape free' installation, with its peel and seal join and its self-adhesive wrap over flap. Fully compliant with the Boiler Installation Standards BS6798:2014, the tough PVC coating is both weatherproof and UV stable.

This insulation is also ideal for use on air source heat pumps or biomass flow and return pipework, to avoid heat loss and meet MIS3005 requirements. To prevent cold bridging use it in conjunction with our Through Wall Sleeve Kit, TW-KIT, to ensure the pipework is fully insulated all the way into the property.



Visit our **YouTube** site for a full installation demonstration:  
<https://youtu.be/gACY2nvMJ0g>

**TEMPERATURE RANGE**  
 EXTENSIVE RANGE (-50°C TO +110°C)  
 ALLOWING BRIEF PEAKS ABOVE LIMITS.

**ANTIMICROBIAL PROTECTION**  
 AN ADVANCED COMPOSITION PREVENTING THE DEVELOPMENT OF BACTERIA AND FUNGI (ASTM E 2180 AND ASTM G21 CERTIFICATION).

**PERMEABILITY**  
 VERY HIGH RESISTANCE TO WATER VAPOUR TRANSMISSION, ENSURING LONG-TERM PERFORMANCE AND EFFECTIVENESS OF THE INSULATION  $\mu \geq 7000$

**THERMAL CONDUCTIVITY**  
 SUPERIOR QUALITY CLOSED-CELL ELASTOMERIC MATERIAL, DESIGNED TO REDUCE THERMAL LOSSES  $\lambda = 0.037\text{W/MK}$  AT +40°C.

**TO BE USED FOR COMPLIANCE WITH RELEVANT TABLE IN BS5422.**

**DENSITY**  
 PRODUCED WITH OPTIMUM DENSITY FOR EFFECTIVE REDUCTION OF THERMAL LOSSES 60 KGR/M<sup>3</sup>,  $\pm 10$  KGR/M<sup>3</sup>.

**FLEXIBILITY**  
 EXCEPTIONAL ELASTICITY AND ENDURANCE FOR TIME-SAVING APPLICATIONS AND EFFECTIVE INSULATION.

## FEATURES

- Avoids heat loss and improves efficiency of the installed air source heat pump
- 19mm wall insulation with a tough PVC coating • Suitable for 28mm / 32mm / 22mm pipework

## THE PACKAGE

- 1 x straight 2000mm length of pre-slit 35mm, 28mm or 22mm ID insulation



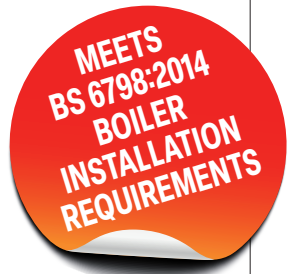
**STEP ONE**  
Open the pre-slit insulation.



**STEP TWO**  
Wrap around the pipe, peel away yellow cover and seal together. Use the adhesive flap to secure.



**STEP THREE**  
Condensate pipework is now fully protected with NEW pre-slit weatherproof insulation



Part code	Size	Thickness	Internal diameter
FH-I-1000-22-SLIT	1000mm L x 19mm Thickness	19mm	22mm ID
FH-I-1000-28-SLIT	1000mm L x 19mm Thickness	19mm	28mm ID
FH-I-1000-28-25-SLIT	1000mm L x 25mm Thickness	25mm	28mm ID
FH-I-1000-35-SLIT	1000mm L x 19mm Thickness	19mm	35mm ID
INS-TAPE-10-PK	PVC Coated Weatherproof Insulation Tape	1mm	Length 250mm, Width 50mm x 1mm (pack 10)

## INSULATION PRE-SLIT WEATHERPROOF INSULATION

The DiversiTech International sales team are available to answer your questions or queries on this product. Our experts are waiting for your call +44 (0)115 900 5858 or if you prefer send an email to [sales@diversitech.com](mailto:sales@diversitech.com) or visit [www.diversitech.global](http://www.diversitech.global)

# NOT ALL INSULATION IS THE SAME!



**GREY/SILVER  
INSULATION FOR  
INTERNAL USE ONLY**



**PAINTED GREY  
INSULATION SHORT  
FIELD LIFE AND  
REQUIRES RECOATING  
EVERY FEW YEARS**



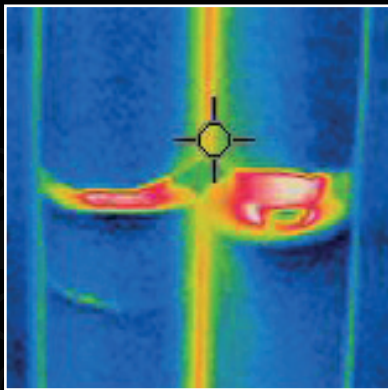
**BLACK CLASS 0  
WEATHER-PROOF BUT  
NOT UV STABLE**



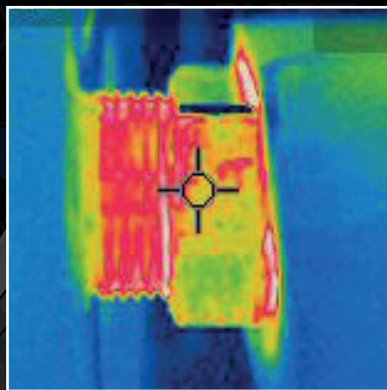
**BLACK PVC COATED  
CLASS 0 WEATHER-  
PROOF AND UV STABLE**

## ARE YOU GETTING 100% OF THE ASHP HEAT INTO YOUR PROPERTY

**INSULATE PIPEWORK**



**INSULATE  
CONNECTIONS**



**INSULATE THROUGH  
THE WALL**

