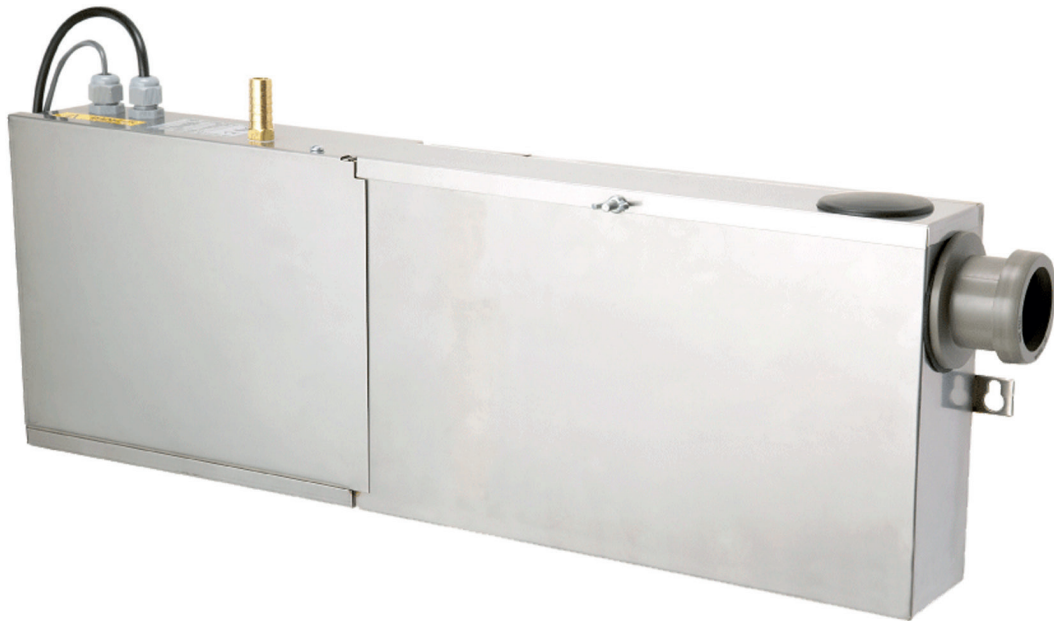


DCP-30V

Dairy Cabinet Pump

INSTRUCTION MANUAL



SPECIFICATION

MODEL	DCP-30V
Max flow	700 LPH
Flow @ 6m	600 LPH
Max head	24.6m
Voltage	230V
Cycle	50Hz
Current	0.6A
Input power	132W

MODEL	DCP-30V
Height	200mm
Length	580mm
Width	76mm
Weight	5kg
Outlet	1/2"

INTRODUCTION

Your Pump House Dairy Cabinet Pump is designed as an automatic condensate and water removal pump for water dripping from refrigeration display cabinets. The pump is controlled by a float switch mechanism that turns the pump on when water collected in the tank reaches a certain level, and automatically switches off when the water level is at its lowest.

The unit you have purchased is of the highest quality workmanship and material. It has been engineered to give you long and trouble free service.

Pump House Dairy Cabinet Pumps are carefully packaged, inspected and tested to insure the safe operation and delivery. When you receive your pump, examine it carefully to determine that there are no broken or damaged parts that may have occurred during shipment. If damaged has occurred, please note the damage and notify your supplier. They will assist you in replacement or repair, if required.

Read instructions carefully before attempting to install, operate or service the Pump House dairy pump. Know the application limitations and potential hazards. Protect yourself and others by observing all safety information. Failure to comply with instructions could result in personal injury and / or property damage. Retain instructions for future reference. Installation and connections are to be made by qualified person.

SAFETY GUIDELINES

Do not use to pump flammable or explosive fluids. Do not use in explosive atmospheres. The pump should be used with liquids compatible with pump component materials.

Do not handle with wet hands or when standing on a wet or damp surface, or in water. This pump must be earthed to reduce risk of electrical shock and to comply with electrical safety regulations.

In any installations where property damage and/or personal injury might result from an inoperative or leaking pump due to power failure, discharge line blockage, or any other reason, a back-up system(s) and/or alarm should be used. Support pump and piping when assembling and when installed. Failure to do so may cause piping to kink, and the pump to fail.

FOR FURTHER INSTALLATION ADVICE PLEASE CALL THE TECHNICAL SUPPORT HELPLINE ON 0115 900 5858.

INSTALLING THE PUMP

- Carefully unpack the pump and remove all packaging.
- The pump is designed to be mounted on the floor beneath a dairy cabinet/refrigerated display case on a flat level surface.
- Place the tank inlet beneath the waste pipe outlet at bottom of cabinet.

ELECTRICAL CONNECTIONS

- Ensure electrical power supply is switched off at mains switch before making any connections. All wiring must comply with electrical safety regulations
- Connect to a 230 Volt constant power supply (not from a fan or other device that runs intermittently) ensuring colour coded wires are connected in line with electrical safety regulations.
- High-level alarm (safety switch) should be connected to a building management system (BMS) or an alarm system in series.
- An inline 3 amp fuse is located in the black plastic box within the electrical compartment.

PIPING

- Connect waste/drain (40mm) pipe from waste water outlet at bottom of cabinet to tank inlet at end of water tank via push-fit connector, allowing a gravity feed from cabinet to dairy pump tank.
- The outlet should be 1/2" flexible tubing, secured with a hose clamp to the 1/2" outlet hose tail. An integral non-return valve is fitted to prevent backflow into the tank. Route the outlet discharge pipe to the appropriate height, but not exceeding the pump's maximum head. From this point slope discharge pipe down to a point above a drain area. If possible, extend the discharge pipe below the level of the dairy pump's tank to achieve a siphoning effect which will aid efficiency

SERVICE INSTRUCTIONS

- Make sure that the unit is disconnected from the 230 volt power supply before attempting to service or remove any component.
- Be sure the float switches move freely. Clean as necessary.
- Clean tank filter and tank with warm water and detergent and dry out
- Check the inlet and discharge piping and clean as necessary. Ensure there are no kinks in the discharge pip that would inhibit flow

TESTING

- Replace pump compartment lid
- Turn on power supply
- Remove water tank cover
- Test motor by raising lower level switch slightly with finger to energise the motor pump unit
- Test safety (alarm) switch by raising the upper level switch with finger to activate alarm.
- Replace water tank cover.

FOR FURTHER INSTALLATION ADVICE PLEASE CALL THE TECHNICAL SUPPORT HELPLINE ON 0115 900 5858.

WARRANTY

Subject to the conditions set out below, the Supplier warrants that the Goods will correspond with their specification at the time of delivery and will be free from defects in material and workmanship for a period of 12 months from delivery and that the Services will be carried out with reasonable care and skill.

The above warranty is given by the Supplier subject to the following conditions: the Supplier shall be under no liability in respect of any defect arising from any drawing, design or specification supplied by the Buyer; the Supplier shall be under no liability in respect of any defect arising from fair wear and tear, wilful damage, negligence of the Buyer or its employees or agents, abnormal working conditions, use of the Goods for or in applications for which they are not designed, failure to properly install the Goods, failure to follow the Supplier's instructions (whether oral or in Writing), misuse or alteration or repair of the Goods without the Supplier's approval; the above warranty does not extend to parts, materials or equipment not manufactured by the Supplier, in respect of which the Buyer shall only be entitled to the benefit of any such warranty or guarantee as is given by the manufacturer to the Supplier.

Subject as expressly provided in these Conditions, all warranties, conditions or other terms implied by statute or common law are excluded to the fullest extent permitted by law.

Any claim by the Buyer which is based on any defect in the quality or condition of the Goods or their failure to correspond with specification shall be notified to the Supplier within 14 days of delivery or (where the defect or failure was not apparent on reasonable inspection) within a reasonable time after discovery of the defect or failure. If delivery is not refused, and the Buyer does not notify the Supplier accordingly, the Buyer shall not be entitled to reject the Goods and the Supplier shall have no liability for such defect or failure, and the Buyer shall be bound to pay the price as if the Goods had been delivered in accordance with the Contract.

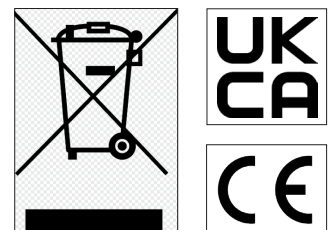
Where any valid claim in respect of any of the Goods which is based on any defect in the quality or condition of the Goods or their failure to meet specification is notified to the Supplier in accordance with these Conditions, the Supplier shall be entitled to replace or repair the Goods (or the part in question) free of charge or, at the Supplier's sole discretion, refund to the Buyer the price of the Goods (or a proportionate part of the price), but the Supplier shall have no further liability to the Buyer.

Except in respect of death or personal injury caused by the Supplier's negligence, the Supplier shall not be liable to the Buyer by reason of any representation (unless fraudulent), or any implied warranty, condition or other term, or any duty at common law, or under the express terms of the Contract, for any indirect, special or consequential loss or damage (whether for loss of profit or otherwise), costs, expenses or other claims for compensation whatsoever (whether caused by the negligence of the Supplier, its employees or agents or otherwise) which arise out of or in connection with the supply of the Goods or their use or resale by the Buyer and the entire liability of the Supplier under or in connection with the Contract shall not exceed the price of the Goods, except as expressly provided in these Conditions.

The obligations of the Supplier shall be suspended during the period and to the extent that the Supplier is prevented or hindered from complying with them by "Force Majeure".

"Force Majeure" means any cause beyond the reasonable control of the Supplier including (without limitation) strikes, lock outs, labour disputes and compliance with any law or governmental order, rule, regulation or direction.

The Supplier may charge for, in addition to the price agreed, any costs incurred as a result of any delay which was due to any cause beyond the Supplier's reasonable control.



FOR FURTHER INSTALLATION ADVICE PLEASE CALL THE TECHNICAL SUPPORT HELPLINE ON 0115 900 5858.