

# AIR SOURCE HEAT PUMPS

## ASHP FLOOR MOUNTING

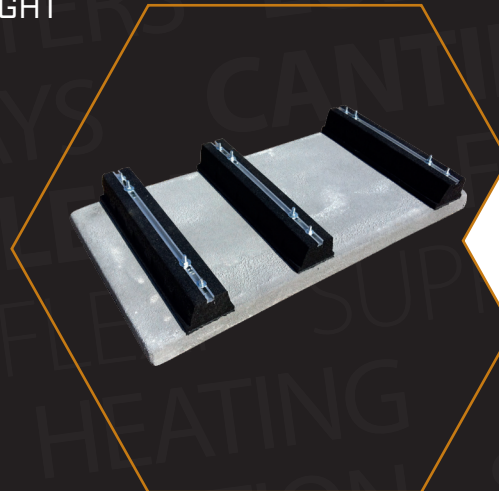
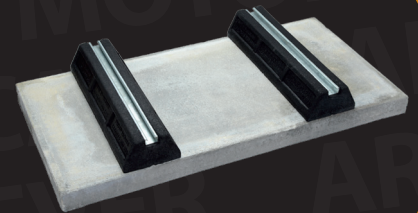
### FLEXI LITE **SLAB AND FOOT KIT** ALL IN ONE SOLUTION

LOW COST, INNOVATIVE SOLUTION FOR FLOOR MOUNTING HEAT PUMPS. THE FLEXI LITE SLAB AND FOOT KITS AVOID THE HIGH COST AND TIME CONSUMING NEED TO CONSTRUCT A CONCRETE BASE.

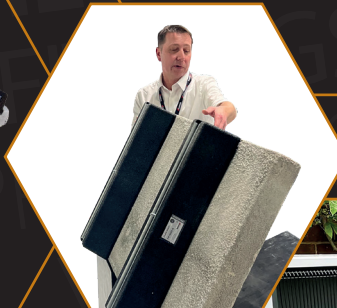
EACH KIT COMES COMPLETE WITH FLEXI RUBBER MOUNTING FEET, AN ULTRALITE SLAB, AND ALL THE FIXINGS.

- CAN BE DELIVERED TO SITE
- MINIMUM PREPARATION AND CAN BE ASSEMBLED IN MINUTES
- HEAVY-DUTY SLAB WITH POLYSTYRENE CORE AND FIBRE REINFORCED CONCRETE COATING
- A FRACTION OF THE WEIGHT OF A TRADITIONAL CONCRETE SLAB

- A FRACTION OF THE WEIGHT OF CONCRETE



- AVAILABLE IN SMALL, MEDIUM, LARGE, EXTRA LARGE AND 3-FOOT



- NO NEED FOR TIME CONSUMING CONCRETE BASE

PUMP  
HOUSE

**DIVERSITECH**<sup>®</sup>  
INTERNATIONAL

[in pump-house-ltd](#)

[pumphousepumps](#)

[@pumphouseltd](#)

[@PumpHouseLtd](#)

[diversitechuk](#)

sales@diversitech.com  
www.diversitech.global