

# AIR SOURCE HEAT PUMPS

## WALL MOUNTING BRACKETS & TRAYS

- OUR WALL MOUNTING **TYPE-2 BRACKETS** COME WITH A CROSS-BAR TO ALLOW FOR CORRECT SPACING OF THE ARMS AS WELL AS AN INTEGRAL SPIRIT LEVEL THAT ALLOWS FOR EASIER INSTALLATION
- OUR EASY-FIT CONDENSATE TRAYS HAVE A CONCAVE PROFILE TO ENSURE EFFICIENT DRAINAGE AND ARE SUPPLIED WITH FIXING ARMS TO MOUNT TO BRACKETS
- ALL BRACKETS AND TRAYS GO THROUGH A 4-STAGE ANTI-CORROSION PROCESS

### BRACKET & TRAY WEATHER PROTECTION PROCESS



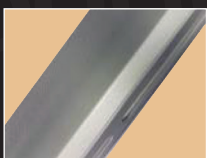
**PROCESS 1**  
CORROSION  
RESISTANT RAW  
MATERIAL, OFTEN  
REFERRED TO AS  
ZINTEC



**PROCESS 2**  
ZINC PHOSPHATING  
PROCESS MULTI STAGE  
CLEANING AND DIPPING  
CHEMICAL ZINC



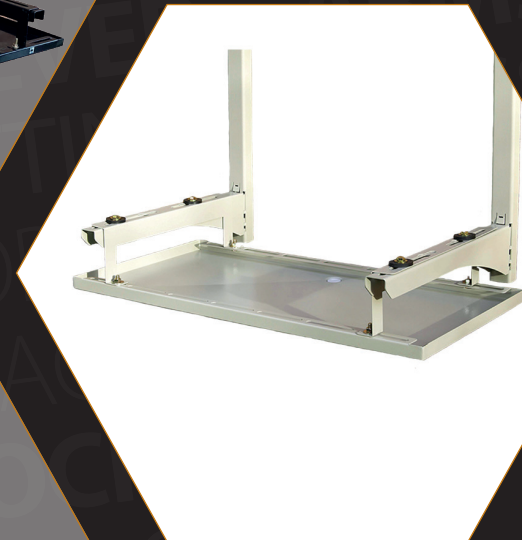
**PROCESS 3**  
ELECTROCOAT PROCESS:  
ELECTROPHORETIC  
DEPOSITION (AKA ED OR  
EPO) COATING



**PROCESS 4**  
EPOXY POLYESTER  
POWDER COATING



- ALL TRAYS ARE  
25MM HIGH



- BRACKETS  
AVAILABLE IN  
2 AND 3 ARMS



- BRACKETS  
& TRAYS  
AVAILABLE IN  
BLACK AND IVORY

PUMP  
HOUSE

**DIVERSITECH**<sup>®</sup>  
INTERNATIONAL

pump-house-ltd

pumphousepumps

@pumphouseltd

@PumpHouseLtd

diversitechuk

sales@diversitech.com  
www.diversitech.global