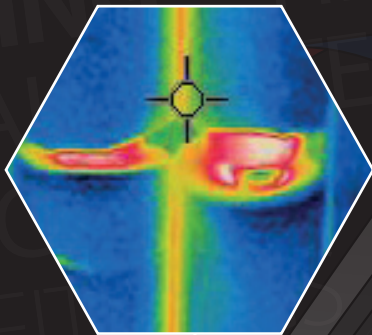


AIR SOURCE HEAT PUMPS

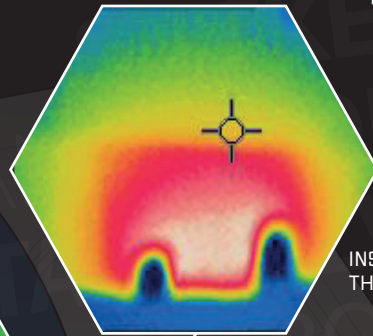
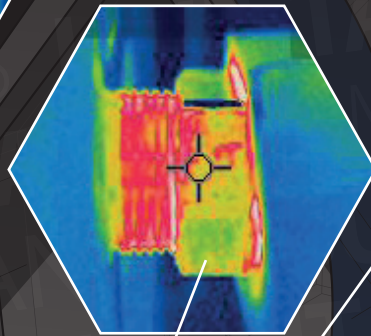
PREVENT HEAT LOSS AND IMPROVE EFFICIENCY WHEN INSTALLING AIR SOURCE HEAT PUMPS

- NO INSULATION CAN RESULT IN A HEAT LOSS OF UP TO 158W/M



INSULATE PIPEWORK

INSULATE CONNECTIONS



INSULATE THROUGH THE WALL

HOW NOT TO INSTALL



- GREY/SILVER INSULATION FOR INTERNAL USE ONLY



- BLACK CLASS 0 WEATHER-PROOF BUT NOT UV STABLE



- PAINTED GREY INSULATION HAS SHORT FIELD LIFE & REQUIRES RECOATING EVERY FEW YEARS

WITH THROUGH THE WALL INSULATION

- 19MM WALL INSULATION WITH A TOUGH PVC COATING
- SUITABLE FOR BOTH 22MM AND 28MM PIPE WORK
- THE TW-KIT PROVIDES BOTH THERMAL INSULATION WITHIN THE EXTERIOR WALL AND COMES COMPLETE WITH AN ELBOW SECTION TO COVER THE EXTERNAL COPPER PIPE CONNECTION

- PROTECT PIPE WORK AGAINST COLD BRIDGING & HEAT LOSS



PUMP HOUSE

DIVERSITECH[®]
INTERNATIONAL

[in pump-house-ltd](#)

[yt pumphousepumps](#)

[fb @pumhouseLtd](#)

[tw @PumpHouseLtd](#)

[ig diversitechuk](#)

sales@diversitech.com
www.diversitech.global