

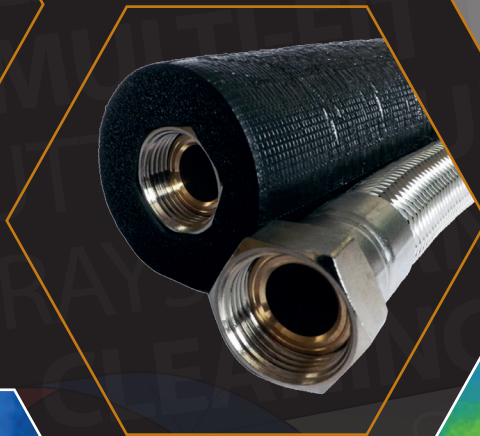
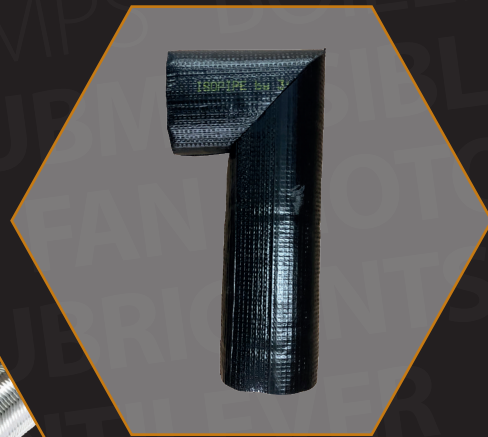
AIR SOURCE HEAT PUMPS

FLEXIBLE CONNECTION HOSES

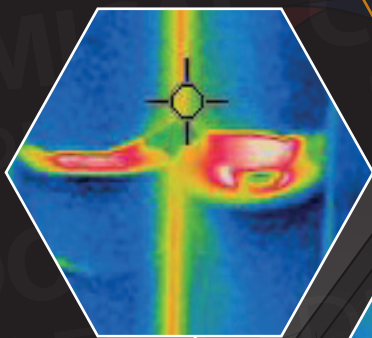
- PRE-INSULATED WITH 19MM THICK PVC COATING
- 1" AND 1-1/4" MALE OR FEMALE BSP THREAD FITTING AVAILABLE
- 28MM COMPRESSION FITTING SUITABLE FOR MOST ASHP BOILERS
- ALL HOSES COME WITH 19MM WALL INSULATION WHICH IS WEATHERPROOF AND UV STABLE
- OUR FLEXIBLE HOSES MEET THE REQUIREMENTS OF MCS MIS 3005, AND HELP TO AVOID TRANSMISSION OF VIBRATION THROUGH THE PIPEWORK



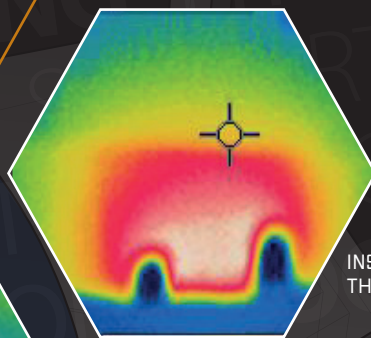
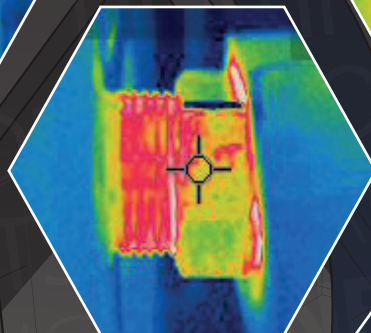
- THE 28MM HOSE IS SLEEVED WITHIN A STAINLESS STEEL BRAID FOR ADDED PROTECTION



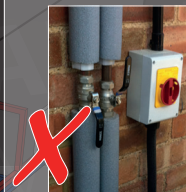
- NO INSULATION CAN RESULT IN A HEAT LOSS OF UP TO 158W/M



INSULATE CONNECTIONS



HOW NOT TO INSTALL



- GREY/SILVER INSULATION FOR INTERNAL USE ONLY



- BLACK CLASS 0 WEATHER-PROOF BUT NOT UV STABLE



- PAINTED GREY INSULATION HAS SHORT FIELD LIFE & REQUIRES RECOATING EVERY FEW YEARS

PUMP HOUSE

DIVERSITECH[®]
INTERNATIONAL

[in pump-house-ltd](#)

[pumphousepumps](#)

[@pumphouseltd](#)

[@PumpHouseLtd](#)

[diversitechuk](#)

sales@diversitech.com
www.diversitech.global