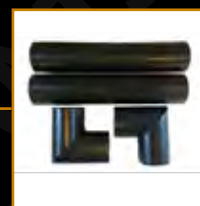


# SPECIALIST PRODUCT GUIDE

## AIR SOURCE HEAT PUMPS



PAGE 3

## BOILER & HEATING



PAGE 19

## & TOOLS FOR THE INSTALLER

PAGE 35



Everything you need from our wide range of products to make installation easier



From chemicals through to leak detection dyes, DiversiTech International covers all your needs



If it is in our extensive range of Easy-Fit products (from brackets to protective guards) - it's EASY-to-FIT

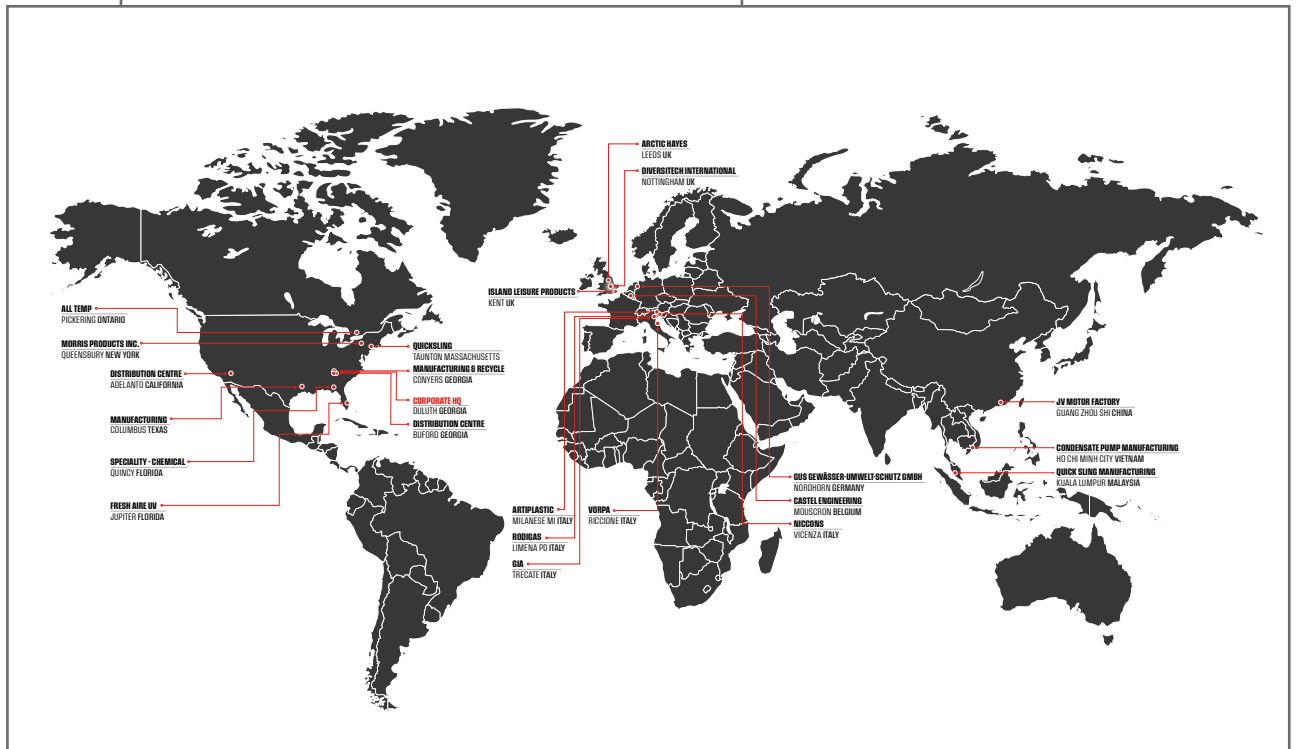


A full range of hand tools including BOSCH, Imperial, Spin and Hilmor



Our comprehensive range of products that provide a simplistic and cost-effective mounting solution

- REFRIGERATION
- AIR CONDITIONING
- BOILER & HEATING
- AIR SOURCE HEAT PUMPS
- FLEXI SUPPORT SYSTEMS
- FIXINGS
- OILS & LUBRICANTS
- TOOLS



# AIR SOURCE HEAT PUMPS INSTALLATION PRODUCTS

## CONTENTS

- **WALL MOUNTING**
- BRACKETS..... 4
- TRAYS..... 5
- **FLOOR MOUNTING** ..... 6
- **INSTALL ACCESSORIES**..... 7
- **SOAK-AWAY** ..... 10
- **CONNECTING** ..... 11
- **INSULATING**..... 11
- **PROTECTING**
- GUARDS..... 13
- TRUNKING..... 14
- **MAINTENANCE** ..... 16



**ARE YOU GETTING 100% OF  
HEAT INTO YOUR PROPERTY**

# INSTALLING



## WALL MOUNTING BRACKETS

BASIC COLOUR RAL 7032

Our Type-2 brackets come with a cross-bar to allow for correct spacing of the arms. An integral spirit level allows for easier installation. All brackets go through a 4-stage anti-corrosion process. \*



WEATHER PROTECTION PROCESS	
	<b>PROCESS 1</b> CORROSION RESISTANT RAW MATERIAL, OFTEN REFERRED TO AS ZINTEC
	<b>PROCESS 2</b> ZINC PHOSPHATING PROCESS MULTI STAGE CLEANING AND DIPPING CHEMICAL ZINC
	<b>PROCESS 3</b> ELECTROPLATED COATING PROCESS: ELECTROPHORETIC DEPOSITION (AKA ED OR EPD) COATING
	<b>PROCESS 4</b> EPOXY POLYESTER POWDER COATING

### IVORY (RAL 7032)

Part code	Description	Safe working load*	Max load	Crossbar	Upright	Support arm	Weight
CBR2-S	Type 2 Bracket - Small	60kg	120kg	720mm	400mm	400mm	3.8kg
CBR2-M	Type 2 Bracket - Medium	90kg	180kg	900mm	500mm	500mm	4.6kg
CBR2-L	Type 2 Bracket - Large	140kg	280kg	1040mm	550mm	540mm	6.6kg
CBR2-XL	Type 2 Bracket - XL	250kg	500kg	1040mm	550mm	660mm	16.2kg
CBR2-XXL	Type 2 Bracket - Double XL	200kg	400kg	1040mm	550mm	780mm	17.3kg

### BLACK

Part code	Description	Safe working load*	Max load	Crossbar	Upright	Support arm	Weight
CBR2-XL-BL	Type 2 Bracket - XL	250kg	500kg	1040mm	550mm	660mm	16.2kg
CBR2-XL-3A-BL	Type 2 Bracket - XL (3 arms)	250kg	500kg	1040mm	550mm	660mm	16.2kg
CBR2-XXL-BL	Type 2 Bracket - XL	200kg	400kg	1040mm	550mm	780mm	16.5kg
CBR2-XXL-3A-BL-DA	Type 2 Bracket - Double XL (3 arms)	200kg	400kg	1120mm	550mm	780mm	17.3kg

\* All brackets are tested to 2 x safe working load.

NB: Sea salts are very corrosive and affect both ferrous and non-ferrous metals. Coastal installations are particularly at risk as they are frequently exposed to sea salt solutions followed by dry periods, where this wet/dry cycle produces a very corrosive environment. We strongly recommend that in such locations only our stainless steel brackets are installed.

## EASY-FIT CONDENSATE TRAYS

BASIC COLOUR RAL 7032

Concave profile to ensure efficient drainage. Supplied with fixing arms to mount to bracket. All trays go through a 4-stage anti-corrosion process (see **WEATHER PROTECTION PROCESS**). All trays are 25mm high.



Part code	Description	Depth	Width	Weight
CCTM-800	Metal tray - small	400mm	800mm	5.23kg
CCTM-1080	Metal tray - 1080mm	500mm	1080mm	7.5kg
CCTM-1100	Metal tray - medium	400mm	1100mm	6.9kg
CCTM-1300	Metal tray - 1300mm	550mm	1300mm	8.8kg
CCTM-1400	Metal tray - large	400mm	1400mm	8.3kg

Part code	Description	Width	Length	Weight
CCTM01420-BL	Metal tray	500mm	1420mm	8.5kg

## FLEXI LITE SLAB AND FOOT KIT

A low cost innovative solution for floor mounting heat pumps. The FLEXI Lite Slab and Foot kits avoid the high cost and time consuming need to construct a concrete base. Each kit comes complete with FLEXI rubber mounting feet, an Ultralite slab, and all the fixings. It can be delivered to site with minimum preparation and can be assembled in minutes. The Ultralite slab is a heavy duty slab with a polystyrene core and a fibre reinforced concrete coating. This makes the slab a fraction of the weight of a traditional concrete slab.



**POSITION SLAB IN REQUIRED POSITION**



**POSITION FEET ON SLAB TO MATCH PITCH OF UNIT**



**INSERT ALL 4 BASE PLATES THROUGH THE SLAB**



**PLACE BOTH FEET OVER BASE PLATE THREADS**



**KIT IS COMPLETE AND READY FOR UNIT**

Part code	Description	Specifications (WxDxH)
FF-UC3-S	Flexi Lite Kit - small	900 x 600 x 175
FF-UC3-M	Flexi Lite Kit - medium	1050 x 600 x 175
FF-UC3	Flexi-Lite Slab Kit	1200 x 600 x 175
FF-UC3-3	Flexi lite Slab Kit - 3 FEET	1200 x 600 x 175
FF-UC3-XL	Flexi-Lite Slab Kit - extra large	1650 x 865 x 175
FF-UC3-3XL	Flexi-Lite Slab Kit - 3 FEET - extra large	1650 x 865 x 175
FF-UC3-3XL-150	Flexi-Lite Slab Kit - 3 FEET (150mm feet) - extra large	1650 x 865 x 225

## INSTALLING



### FLEXI FOOT - SINGLE

Flexi Foot with 41mm galvanised Steel channel.



Part code	Size L x W x H mm	Weight	Safe working load
FF-250-S	250x185x100	2.8kg	175kg
FF-400-S	400x185x100	4.6kg	280kg
FF-600-S	600x185x100	7.6kg	420kg
FF-600-S-150	600x162x150	7.2kg	420kg
FF-1000-S	1000x185x100	12kg	700kg

### FLEXI FOOT KITS

2 x Flexi feet with fixings pack.



Part code	Description
FF-400-S-KIT	FLEXI-FOOT Kit - 400 (2 x 400mm feet + fixing kit)
FF-600-S-KIT	FLEXI-FOOT Kit - 600 (2 x 600mm feet + fixing kit)
FF-600-S-KIT-3	FLEXI-FOOT Kit - 600 (3 x 600mm feet + fixing kit)
FF-600-3-ASN-KIT	FLEXI-FOOT Kit - 600 narrow (3 x FF-600-ASN + fittings kit)
FF-600-S-150-KIT	FLEXI-FOOT Kit - 600 x 150 high (2 x 600mm x 150mm feet + fixing kit)
FF-600-S-150-KIT-3	FLEXI-FOOT Kit - 600 x 150 high (3x 600mm x 150mm feet + fixing kit)
FF-1000-S-KIT	FLEXI-FOOT Kit - 1000 (2 x 1000mm feet + fixing kit)

### BABY SUMO RUBBER ADJUSTABLE SUPPORT FOOT

These mini adjustable feet are perfect as ground supports for AC and ASHP units. They are made from reprocessing discarded tyres where 70-95% of the rubber can be recovered. These feet are made of a blend of SBR vulcanised UV-stable rubber with internal glass fibre-reinforced polypropylene.

**NB: THERE IS A 15° ANGLE OF ADJUSTMENT AT THE FIXING POINT**



Part code	Description	Height (B)	Width (A)	Depth (C)	Safe working load	Fixing (D)	QTY
SUMO-FT	Mini adjustable foot	160-210mm	160mm	160mm	150kg (per foot)	M10	Pack of 4
SUMO-FT-6	Mini adjustable foot	160-210mm	160mm	160mm	150kg (per foot)	M10	Pack of 6

## ANTIFREEZE VALVES

Antifreeze valves are used to prevent the formation of ice in the circuit of a system, avoiding possible damage to the machine and pipes. The antifreeze valve allows the fluid to be discharged from the circuit when its temperature reaches an average value of 3 °C.

AF-1-1-MALE



AF-1SWVF-1-MALE



AF-28-28-COMP



- Operating temperature: 0 ÷ 90°C
- Nominal Pressure: PN 10
- Fluid temperature (opening): 3°C
- Fluid temperature (closing): 4 °C
- Made of brass alloy compliant with

- EN 12165-CW617N-DW standard.
- 100% tested according to EN 12266-1.
- Made in compliance with the management requirements of the EN ISO 9001 standard.

Part code	Description	Information
AF-1-1-MALE	ANTIFREEZE VALVE	1" X 1" BSP MALE FITTING
AF-1SWVF-1-MALE	ANTIFREEZE VALVE WITH SWIVEL NUT	1" SWIVEL FLAT-FACE FEMALE X 1" BSP MALE FITTING
AF-28-COMP	DOUBLE-CONE ANTIFREEZE VALVE	28 X 28 COMPRESSION FITTING

## BALL VALVES

Full bore long-stem 28mm compression ball valve with nickel-plated brass valve body and red handle to be used in water applications



WITH INSULATION SLEEVE



**DESIGNED BY DIVERSITECH FOR AIR SOURCE HEAT PUMP INSTALLS**

- Connection: Compression
- Material: Nickel-plated brass
- Working temperature: -10°C to 85°C
- Pressure range: 16 bar at 30° C, 10 bar at 65° C and 8 bar at 85° C
- Size: 28mm
- Type: Full bore ball valve
- Compression complies with BS EN1254-2
- Pressure test under 0.6-0.8 MPa without any leakage
- Suitable for hot and cold water
- Working pressure: 1.6 MPa
- Long stemmed for use with ASHP insulation 19mm - 25mm thick

Part code	Information
BV-28-28-COMP-AGSTEM	Full bore long-stem 28mm compression ball valve

## ACCESSORIES



### FLEXI FOOT FIX CLAMP

PART NO FF-FIXCLAMP

The fix clamp allows you to secure flexi feet to the floor using anchor bolts. Fixings not supplied



### ANTI VIBRATION MOUNTING BOLTS

PART NO AVMB-1

Pack of 4 anti-vibration bolts. Can be used with all DiversiTech International wall brackets



### FLOOR BRACKET KIT

PART NO CCTM-FLOOR-BRKT-KIT

Brackets to allow a condensate tray to be mounted on to flexifeet. The ASHP can then be mounted on the brackets.



Part code	Description
CCTM-FLOOR-BRKT-KIT	Stainless Floor Bracket Kit for drip trays - 4 x brackets and fixings
CCTM-FLOOR-BRKT-KIT3	Stainless Floor Bracket Kit for drip trays - 6 x brackets and fixings

## ROTARY ISOLATORS

Our insulated 3 and 4 pole rotary enclosed isolators are CE marked and disconnecting the power supply to outdoor air source heat pump units. They are waterproof to IP65 and easy to install and conform to IEC 60947- a lockable off position and interlocking cover which can be removed only position. Earth and neutral terminals included and M20/25 knockouts up



Part code	No of poles	AMPS AC21	AC23 A 240VA	AC23 A 400VA	Cable capacity		Height	Width	Depth
					Solid	Stranded			
IS-3P-20A-S-G	3	20amp	5.5kW	3.7kW	1-16mm <sup>2</sup>	0.75-10mm <sup>2</sup>	125mm	100mm	120mm
IS-3P-32A-S-G	3	32 amp	11kW	7.5kW	1-16mm <sup>2</sup>	0.75-10mm <sup>2</sup>	125mm	100mm	120mm
IS-3P-20A-G	3	20amp	5.5kW	3.7kW	1-16mm <sup>2</sup>	0.75-10mm <sup>2</sup>	175mm	114mm	135mm
IS-3P-32A-G	3	30amp	11kW	7.5kW	1-16mm <sup>2</sup>	0.75-10mm <sup>2</sup>	175mm	114mm	135mm
IS-3P-40A-G	3	40amp	15kW	11kW	1-16mm <sup>2</sup>	0.75-10mm <sup>2</sup>	175mm	114mm	135mm
IS-3P-63A-G	3	63amp	22kW	18.5kW	1-16mm <sup>2</sup>	0.75-10mm <sup>2</sup>	175mm	114mm	135mm
IS-4P-20A-S-G	4	20amp	5.5kW	3.7kW	1-16mm <sup>2</sup>	0.75-10mm <sup>2</sup>	125mm	100mm	120mm
IS-4P-32A-S-G	4	32 amp	11kW	7.5kW	1-16mm <sup>2</sup>	0.75-10mm <sup>2</sup>	125mm	100mm	120mm
IS-4P-20A-G	4	20amp	5.5kW	3.7kW	1-16mm <sup>2</sup>	0.75-10mm <sup>2</sup>	175mm	114mm	135mm
IS-4P-32A-G	4	32amp	11kW	7.5kW	1-16mm <sup>2</sup>	0.75-10mm <sup>2</sup>	175mm	114mm	135mm
IS-4P-40A-G	4	40amp	15kW	11kW	1-16mm <sup>2</sup>	0.75-10mm <sup>2</sup>	175mm	114mm	135mm
IS-4P-63A-G	4	63amp	22kW	18.5kW	1-16mm <sup>2</sup>	0.75-10mm <sup>2</sup>	175mm	114mm	135mm

## EXPANDING FOAM SEALANT

A one component closed-cell expanding polyurethane foam sealant that is tack free in 20 minutes. Can be painted to prevent UV damage after 12 hours of drying time. Used to seal around doors, windows, pipes, ducts and vents - in fact, virtually anywhere.



Part code	Description	UOM	Master Qty
FOAM-152760	Gap filler expanding foam - 300ml	Each	12
FOAM-135234	Gap filler expanding foam - 600ml	Each	12

## SILICONE SEALANTS

Available in clear or white, DiversiTech silicone sealants are 100% food grade and can be used in applications for continuous use up to 232°C. It is UV and water resistant and has long term flexibility.



Part code	Description	UOM	Master Qty
7-4000	Clear Silicone Sealant - 305ml	Each	12
7-4100	White Silicone Sealant - 305ml	Each	12

## DIVERSI-GUM SEALING COMPOUND

Diversi-Gum is a non-hardening, non-corrosive sealing compound that is immediately paintable and has a temperature usage range between -4°C and 49°C. It is ideal for sealing openings through walls from pipework.



Part code	Description	UOM	Master Qty
6-202-1	Diversi-Gum Sealing compound 450g slug	Each	24
6-202-2	Diversi-Gum Sealing compound 900g slug	Each	20

## DIVERSI-BOND

Diversi-Bond is a versatile, strong elastic adhesive and sealant for use in bonding and sealing applications in the construction industry. Ideal for air conditioning, plumbing and ventilation sectors where a tough flexible rubber joint and a powerful elastic adhesive bond is required.

- Waterproof and UV-stable
- Expands and contracts with temperature variants (-40°C - +100°C)
- Long-lasting protection against moisture ingress
- Solvent and isocyanate free



Part code	Description	Size	Colour
DIVERSI-BOND	Sealant adhesive for insulation	290ml	Black

# INSTALLING



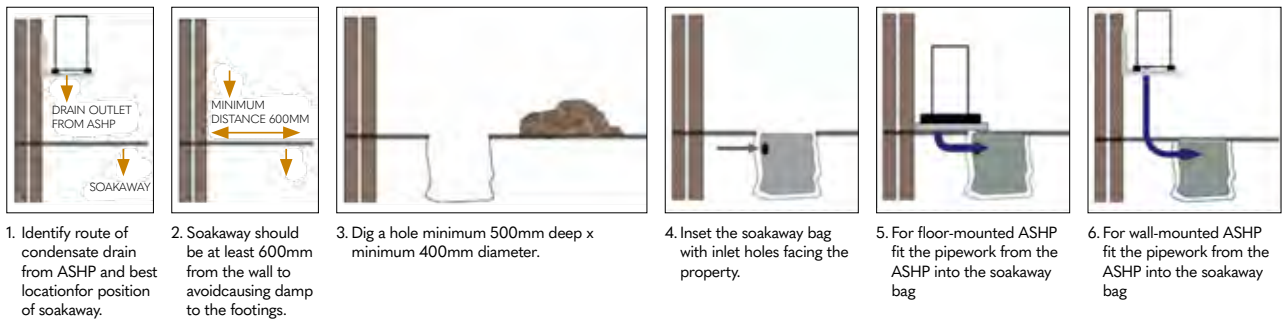
## ACCESSORIES

### ASHP SOAK-AWAY

This unique pre-bagged geo textile soakaway is used to safely dispose of the condensate from all domestic sized air source heat pumps where drain routing is not available. The volume of condensate created from an air source heat pump up to 16kW can be between 10-15 litres per hour up to 2000 litres per year. This method prevents the condensate from flowing onto paths and driveways, which can freeze and cause a slip hazard.



- Alternative method to condensate removal disposal
- Suitable for all models/brands of air source heat pumps
- Made from pre-bagged geo-textile material to prevent soil ingress
- 32mm inlet
- Capacity - 10-15 litres per hour
- Helps with MIS 3005 compliance and complies with BRE 365



Part code	Description	Inlet	Diameter	Height
ASHP-SOAK	Air source heat pump soakaway - pre bagged geo textile with rubber chippings	32mm	400mm	400mm



AVOID PROBLEMS RESULTING FROM INCORRECT DISPOSAL OF CONDENSATE

## FLEXIBLE CONNECTION HOSES

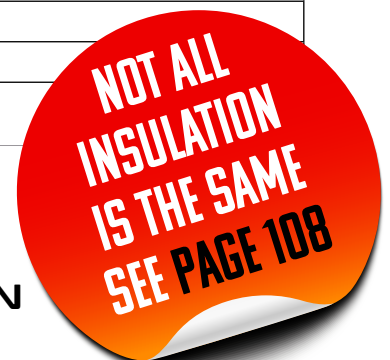
Our flexible hoses meet the requirements of MCS MIS 3005, and help to avoid transmission of vibration through the pipework.

The 28mm hose is sleeved within a stainless steel braid for added protection. All hoses come with 19mm wall insulation which is weatherproof and UV stable.



SOLD IN PAIRS

Part code	Description
FH-300-28-F-ELBOW	Flexible ASHP Hose Pair -300mm x 28mm - 1" FEMALE c/w elbow
FH-300-28-1/4ELB	Flexible ASHP Hose Pair -300mm x 28mm - 1/4" FEMALE c/w elbow
FH-500-22-F	Flexible ASHP Hose Pair -500mm x 22mm - 1" FEMALE
FH-500-28-F	Flexible ASHP Hose Pair -500mm x 28mm - 1" FEMALE
FH-750-28-F	Flexible ASHP Hose Pair -750mm x 28mm - 1" FEMALE
FH-750-28-M	Flexible ASHP Hose Pair -750mm x 28mm - 1" MALE
FH-750-28-F-ELBOW	Flexible ASHP Hose Pair -750mm x 28mm - 1" FEMALE c/w elbow
FH-750-28-1/4F	Flexible ASHP Hose Pair -750mm x 28mm - 1/4" FEMALE
FH-750-28-1/4M	Flexible ASHP Hose Pair -750mm x 28mm - 1/4" MALE



# INSULATING

## PVC COATED EXTERNAL GRADE INSULATION

External condensate pipework needs to be insulated in a tough PVC coated weather protected covering to avoid UV degradation and animal damage. Boiler installation standards BS 6798-2104 makes specific reference to this grade of insulation. Air source heat pumps and Biomass Boilers tend to be located externally and this hot water pipework needs to be protected and insulated to avoid heat loss, MIS3005 and building regulations advise a certain thickness of insulation to meet heat loss requirements. Our PVC coated range helps installations comply in both boiler condensate and Air source heat pumps installations.



Part code	Description	Length	Diameter	Thickness	ID
FH-I-1000-15	PVC Coated Weather & Waterproof Insulation	1000mm	41mm	13mm	15mm
FH-I-1000-22	PVC Coated Weather & Waterproof Insulation	1000mm	60mm	19mm	22mm
FH-I-1000-28	PVC Coated Weather & Waterproof Insulation	1000mm	66mm	19mm	28mm
FH-I-1000-28-25	PVC Coated Weather & Waterproof Insulation	1000mm	66mm	25mm	28mm
FH-I-1000-28-CLO	PVC Coated Weather & Waterproof Insulation	1000mm	66mm	19mm	28mm
FH-I-1000-35	PVC Coated Weather & Waterproof Insulation	1000mm	73mm	19mm	35mm
INS-TAPE-10-PK	PVC Coated Weather & Waterproof Tape	250mm	50mm	1mm	10 pack

## INSULATING



### PRE SLIT AND SEAL INSULATION

Our new insulation provides outstanding protection against the elements for external pipework on boiler condensate ASHP and Biomass boilers.

The new design offers a quick and secure 'tape free' installation with its peel and seal join and self adhesive wrap-over flap. The tough PVC coating is both weatherproof and UV stable.



Part code	Size	Thickness	Internal diameter
FH-I-1000-22-SLIT	1000mm L x19mm Thickness	19mm	22mm ID
FH-I-1000-28-SLIT	1000mm L x19mm Thickness	19mm	28mm ID
FH-I-1000-28-25-SLIT	1000mm L x25mm Thickness	25mm	28mm ID
FH-I-1000-35-SLIT	1000mm L x19mm Thickness	19mm	35mm ID
INS-TAPE-10-PK	PVC Coated Weatherproof Insulation Tape	1mm	Length 250mm, Width 50mm x 1mm (pack 10)

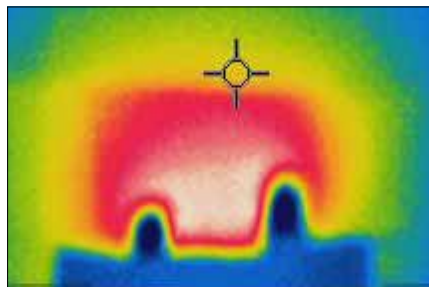
### THROUGH THE WALL INSULATION KIT

Pipework running through the wall will be affected by cold bridging and heat loss if it's not insulated correctly. MIS 3005 requires external pipework to be properly insulated.

This provides both thermal insulation within the wall and comes complete with an elbow section to cover the external copper pipe connection.



Part code	Size
TW-KIT	Through the Wall Insulation Kit



THE CONNECTION OF THE PIPEWORK RUNNING THROUGH THE WALL

THERMAL IMAGES SHOWING JUST HOW MUCH HEAT IS LOST WHEN THESE CONNECTIONS ARE NOT ADEQUATELY INSULATED

## ASHP GUARDS

BASIC COLOUR  
RAL 7032

DiversiTech International manufacture a range of weather-resistant, steel mesh guards, offering a safe solution to avoid vandalism or accidental damage of your expensive ASHP. The range is ideal for all manufacturers of ASHP units. The unique sliding panel system allows for easy installation, which are secured into place when the front panel is fitted. Back panels are also available to make the guard free standing. For high wall mounted units, we can offer a base panel for full security.



Part code	Size	External dimensions			Internal dimensions			Weight
		Height	Width	Depth	Height	Width	Depth	
CG-750-S	S	950mm	1150mm	750mm	920mm	1120mm	740mm	25kg
CG-750-S-INV	S	950mm	1450mm	750mm	920mm	1420mm	740mm	25.1kg
CG-750-M	M	1150mm	1150mm	750mm	1120mm	1120mm	740mm	32kg
CG-750-L	L	1450mm	1150mm	750mm	1420mm	1120mm	740mm	33kg
CG-750-INV	INV	1150mm	1450mm	750mm	1120mm	1420mm	740mm	33kg

Part code	Size	Height	Width	Depth	Height	Width	Depth	Weight
CG-900L-INV	L	1150mm	1450mm	900mm	1120mm	1420mm	890mm	34kg
CG-900L-SQ	L-SQ	1450mm	1450mm	900mm	1420mm	1370mm	890mm	51kg
CG-900-XXL	XXL	1800mm	1450mm	900mm	1770mm	1370mm	890mm	60kg

Part code	Size	Height	Width	Depth	Height	Width	Depth	Weight
CG-S	S	750mm	1050mm	460mm	720mm	1020mm	450mm	18kg
CG-M	M	1150mm	1150mm	650mm	1120mm	1120mm	640mm	27kg
CG-L	L	1450mm	1150mm	650mm	1420mm	1120mm	640mm	30kg
CG-XL	XL	1800mm	1150mm	650mm	1770mm	1120mm	640mm	40kg
CG-S-BLACK	S	750mm	1050mm	460mm	720mm	1020mm	450mm	18kg
CG-M-BLACK	M	1150mm	1150mm	650mm	1120mm	1120mm	640mm	27kg
CG-L-BLACK	L	1450mm	1150mm	650mm	1420mm	1120mm	640mm	30kg
CG-XL-BLACK	XL	1800mm	1150mm	650mm	1770mm	1120mm	640mm	40kg

## WOODEN CONDENSER GUARDS

Made from tanalised, pressure-treated timber. All panels have rounded louvers to optimise air flow. Sized to protect both ASHP and AC units, these guards offer a solution for listed buildings and sites where aesthetics are a consideration. All components are flat-packed for easy transport, and easy-to-install and assemble.



Part code	Description	External dimensions			Internal dimensions		
		Height	Width	Depth	Height	Width	Depth
CG-750S-WOOD	Small Guard	905/960	1275	865	850/890	1050	753
CG-750M-WOOD	Medium Guard	1135/1135	1275	865	1075/1115	1055	753
CG-750M+WOOD	Medium+ Guard	1255/1310	1275	865	1200/1240	1055	753
CG-750L-WOOD	Large Guard	1530/1585	1275	865	1475/1515	1055	753
CG-750LINV-WOOD	Large Inv Guard	1130/1185	1630	865	1075/1115	1405	753
CG-750L+WOOD	Large+ Guard	1600/1655	1275	865	1545/1585	1055	753
CG-750L+INVWOOD	Large+ Inv Guard	1655/1690	1630	865	1580/1620	1405	753

## PROTECTING



### EXTERNAL TRUNKING

Pipework and insulation running from an air source heat pumps should be protected. Our range of trunking comes in a 140mm width with an ivory or black option and accommodates both the insulated flow and return pipework along with any associated cabling.

- Easy to install
- 140mm wide
- Provides a professional and neat finish
- Made from high grade, UV stable, fade resistant PVC
- Available in Ivory and Black
- Protection from the elements, accidental damage and pest damage



Ivory part code	Description	Size (depth x width)
TR-D-140	140mm Trunking (2000mm Length)	90mm x 140mm
TR-WC-140	140mm Wall Cover	90mm x 140mm
TR-CP-140	140mm Straight Connector	90mm x 140mm
TR-IC-140	140mm 90 Degree Internal Bend	90mm x 140mm
TR-FB-140	90 Degree Flat Bend	90mm x 140mm
TR-EC-140	90 Degree External Bend	90mm x 140mm

Black part code	Description	Size (depth x width)
TR-D-140-B	140mm Trunking (2000mm Length)	90mm x 140mm
TR-WC-140-B	140mm Wall Cover	90mm x 140mm
TR-CP-140-B	140mm Straight Connector	90mm x 140mm
TR-EC-140-B	140mm Straight Connector	90mm x 140mm
TR-IC-140-B	140mm 90 Degree Internal bend / External bend	90mm x 140mm
TR-FB-140-B	90 Degree Flat Bend	90mm x 140mm
TR-EL45-140-B	45 Degree Vertical Bend	90mm x 140mm

AVAILABLE IN



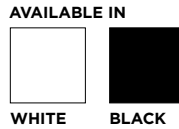
IVORY



BLACK

# PROTECTING

## EXTERNAL TRUNKING



- Made of rigid, shockproof, UV-stabilised fire resistant PVC B
- High-quality (usable from -20°C / -4°F to +60°C / 140°F in a static position)
- The inside fixation rail (SpinFix) allows you to use cable ties to strap and keep the linesets in place - contributing to the duct rigidity

## DUCT



Description	Width	Colour	Part code
SpeediDuct trunking (2000mm length)	150mm	Black	TR-D-150-B
SpeediDuct trunking (2000mm length)	150mm	White	TR-D-150-W

## CONNECTION PIECE



Description	Width	Colour	Part code
SpeediDuct Connection piece	150mm	Black	TR-CP-150-B
SpeediDuct Connection piece	150mm	White	TR-CP-150-W

## FLAT BEND



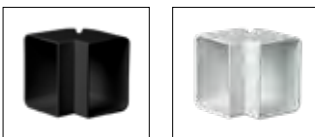
Description	Width	Colour	Part code
SpeediDuct flat bend	150mm	Black	TR-FB-150-B
SpeediDuct flat bend	150mm	White	TR-FB-150-W

## WALL COVER



Description	Width	Colour	Part code
SpeediDuct wall cover	150mm	Black	TR-WC-150-B
SpeediDuct wall cover	150mm	White	TR-WC-150-W

## 90° EXTERNAL BEND



Description	Width	Colour	Part code
SpeediDuct 90° external bend	150mm	Black	TR-EC-150-B
SpeediDuct 90° external bend	150mm	White	TR-EC-150-W

## 90° INTERNAL BEND



Description	Width	Colour	Part code
SpeediDuct 90° internal bend	150mm	Black	TR-IC-150-B
SpeediDuct 90° internal bend	150mm	White	TR-IC-150-W

## MAINTAINING

### COIL CLEANING

Heat exchangers can get clogged with dirt and debris. It's essential to keep these clean to maintain optimum efficiency. PRO-HEATPUMP / G@G-HEATPUMP are environmentally friendly cleaners for ASHP heat exchangers. Available ready-mixed or concentrated.



Part code	Description
G2G-Green+	G2G Green 1 Litre pre-mixed Coil Cleaner Spray
Pro-Green-GB	Pro-Green 5 Litre Concentrated Coil Cleaner

### BUBBLE-UP LEAK SPRAY

Leak Seek is a leak detection spray designed to locate refrigerant leaks. Suitable for high and low pressure leaks, this formulation is alcohol and solvent free and has long lasting bubbles.



Part code	Description
AER-B-500	500ml Leak Detection Spray

### ELECTRONIC LEAK DETECTOR - TIF XP-1A

The TIF XP-1A detects all HFC, HFO and HCFC refrigerants, and will find a leak as small as 3 grams per year. Requires 2 x 'C' Batteries.



Part code	Description
TIF-XP1A	TIF Electronic Leak Detector

## A3 KIT

Tube Benders		
1	HIL-1839031	Spring Bender 4 Pack 1/4" - 5/8"
Flaring & Swaging		
2	1838947	Quick Engage Flare & Swage 3/16 To 3/4
Tools		
3	Bosch RG-4.0	Bosch RG 4.0 Refrigerant Recovery Machine 240V A3/A2L
4	RA1550-A3	Robinair 5cfm Vacuum Pump A3 Dual Voltage Spark Proof
5	RA1500-A3	10 Metre Exhaust Kit for RA1550-A3
6	CVG1200	Hilmor Digital Vacuum Gauge
7	Bosch CS-LD-1	Bosch Refrigerant/Hydrocarbon Leak Detector
8	TIF9030E	TIF Refrigerant Scale 100Kg
9	1839106	Digital Dual Readout thermometer
Vacuum		
11	IMP-572FTY	Vacuum Hose 3/8" x 72"



## A2L KIT

Tube Benders		
1	HIL-1839031	Spring Bender 4 Pack 1/4" - 5/8"
Flaring & Swaging		
2	1838947	Quick Engage Flare & Swage 3/16 To 3/4
Tools		
3	Promax RG3000	Promax RG3000 Refrigerant Recovery Machine 240v A2L
4	RA15501-A-E-A2L	Robinair 5cfm Vacuum Pump A2L 240V
5	CVG1200	Hilmor Digital Vacuum Gauge
6	Bosch CS-LD-1	Bosch Refrigerant/Hydrocarbon Leak Detector
7	TIF9030E	TIF Refrigerant Scale 100Kg
8	1839106	Digital Dual Readout thermometer
Vacuum		
10	IMP-572FTY	Vacuum Hose 3/8" x 72"

# NOT ALL INSULATION IS THE SAME!



GREY/SILVER INSULATION  
FOR INTERNAL USE ONLY



PAINTED GREY INSULATION  
SHORT FIELD LIFE AND  
REQUIRES RECOATING  
EVERY FEW YEARS



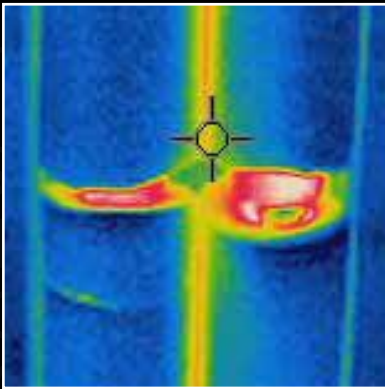
BLACK CLASS 0  
WEATHER-PROOF BUT  
NOT UV STABLE



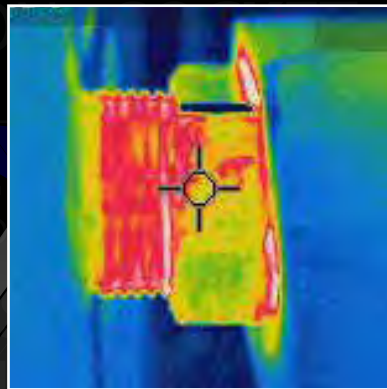
BLACK PVC COATED  
CLASS 0 WEATHER-PROOF  
AND UV STABLE

## ARE YOU GETTING 100% OF HEAT

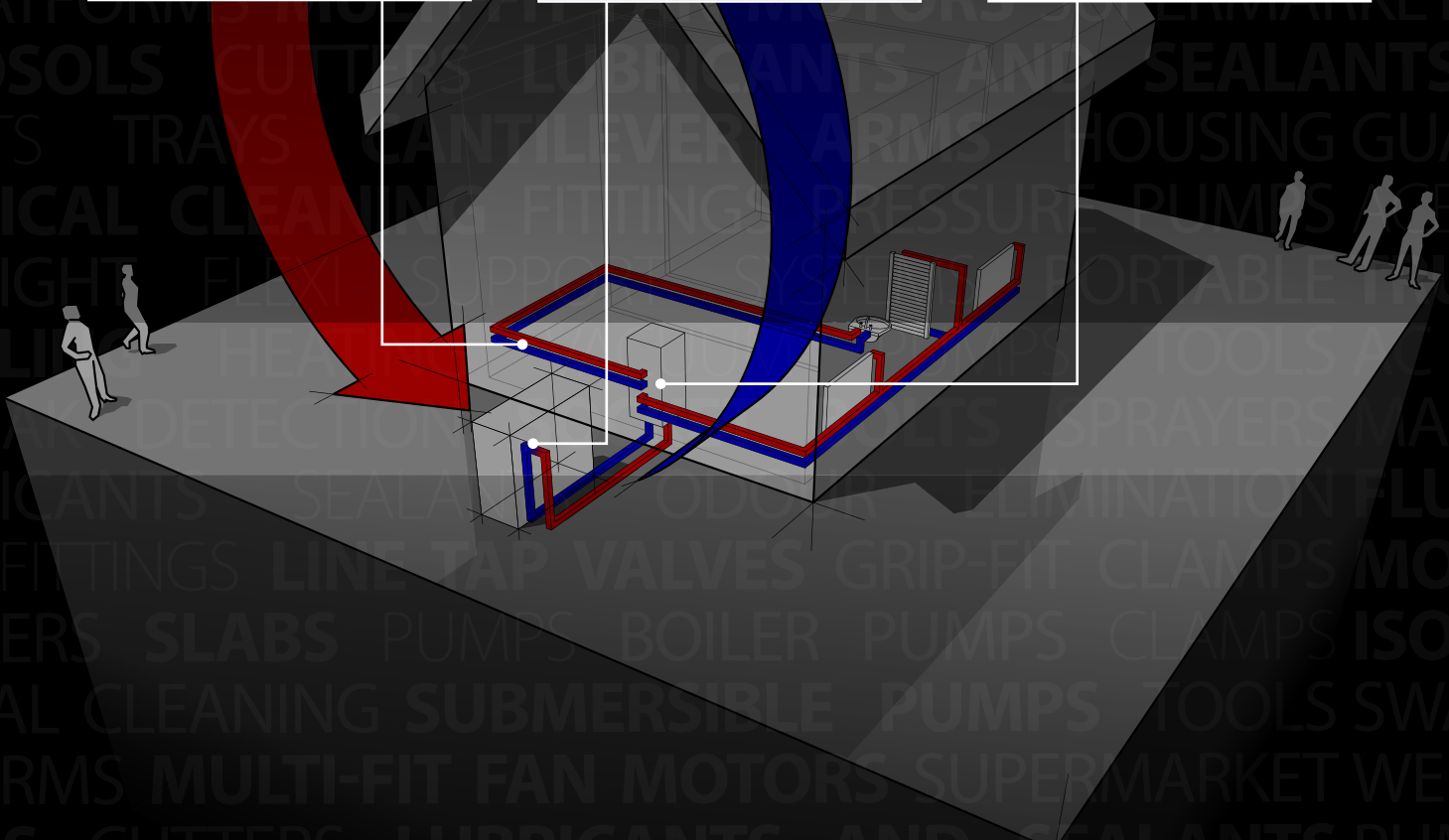
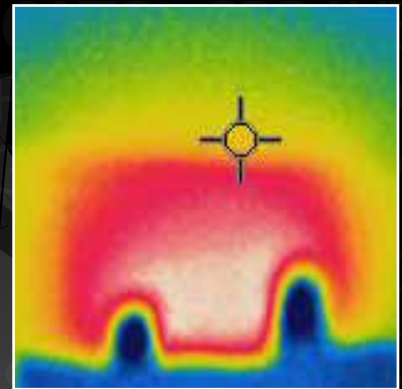
INSULATE PIPEWORK



INSULATE CONNECTIONS



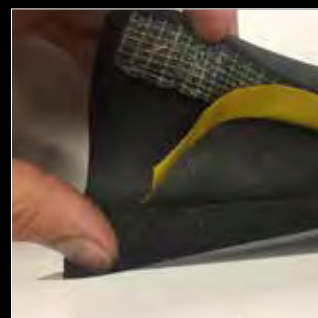
INSULATE THROUGH THE WALL



# BOILER & HEATING

## CONTENTS

- BOILER CONDENSATE PUMPS ..... 20
- CONDENSATE NEUTRALISERS ..... 20
- HIGH TEMPERATURE PUMPS ..... 21
- SUBMERSIBLE PUMPS ..... 23
- POOL COVER PUMPS ..... 23
- SOAKAWAY ..... 24
- BYPASS VALVE ..... 24
- PUMP ACCESSORIES ..... 25
- PORTABLE AC ..... 26
- TORCHES ..... 28
- SWITCHES ..... 29
- MAINTENANCE ..... 29
- SEALANTS ..... 30
- WELDING ..... 31
- MIRRORS ..... 31
- CLOTHS ..... 31
- PLASTIC PIPE FITTINGS ..... 32



## BOILER CONDENSATE PUMPS



### TANK PUMPS

DiversiTech stock a range of boiler condensate removal pumps that are ideal when the boiler condensate can not be removed via gravity. The tank pumps use a small bore of flexible hose which can be routed above or below doors, windows or under kitchen cabinets.

When routing hose through any area which could be exposed to freezing temperatures, such as lofts, basements or garages, we strongly recommend increasing to at least 32mm plastic pipe and insulating.



Part code	Brand	Description	Max head	Max flow	Drink cycle	Dimensions mm (HxWxD)	Discharge Size (inch)
PH-0.8LC	Pump House	0.8 Litre Tank Pump with Cover	3m	150LPH	200ml	128x210x86	9.5mm (3/8)
PH-0.8L-HL	Pump House	0.8 Litre Tank Pump	6.8m	456LPH	300ml	141x220x134	6.35mm (1/4") 9.5mm (3/8)
PH-20-STA	Pump House	2 Litre Tank Pump	5.5M	402LPH	650ML	166x286x135	9.5mm (3/8)

## CONDENSATE NEUTRALISERS

### COMMERCIAL CONDENSATE NEUTRALISER - 20 & 30 LITRES

Installing a neutraliser will reduce the impact of damage to existing boiler concrete drainage gullies and allow for the condensate to be disposed of safely.

The 20-litre stainless steel version can handle condensate from boilers up to 600kW by gravity.

The 30-litre version comes complete with a pump to provide a 5.9 metre lift and a flow rate of up to 900 litres per hour. Both come with lime chippings for instant installation and are suitable for 2.8pH boiler condensate.



BCONDNEUT-20L\*

BCONDNEUT-30L\*

Part code	Brand	Description	Tank capacity	Dimensions mm (HxWxD)	Discharge Size (inch)	Inlet	Weight
BCONDNEUT-20L	Pump House	20 Litre with lime chippings	20L	200x400x300	9.5mm (3/8)	40mm	27kg
BCONDNEUT-30L	Pump House	30 Litre with pump & lime chippings	30L	200x550x305	9.5mm (3/8)	40mm	30kg

\* Modular & bespoke designs are available for boilers over 600kW.

# HIGH TEMPERATURE AND PRESSURE RELIEF PUMPS



## PRVSURE PRV & CONDENSATE PUMP

This pump is manufactured from high temperature plastic, and comes complete with 10m of higher specification hose.

It meets EN Standards and can handle temperatures up to 110 degrees. Supplied with 10 metres of

'no sag' high grade braided hose. The unique design also cools the PRV discharge so it is safe for use with solvent weld pipework. For installers who are audited or working to EN Standards.

**PRV**Sure



PH-3.8L-HW

Part code	Brand	Description	Max head*	Max flow	Temp	Dimensions mm (HxWxD)	Discharge Size (inch)
PH-3.8L-HW	Pump House	High Temperature & Pressure Relief Pump	8m / 20m	32 LPM (1920LPH)	100°C	350x190x260	15mm

\* meeting BS6798:2014 PRV requirements

## HIGH TEMPERATURE PRESSURE RELIEF PUMP - PH-5L-HW

Designed for unvented cylinder T&P discharge and steam humidifiers.

Having one of the largest discharge rates of 32 litres per minute this pump can handle both high temperature up to 100 degrees and high flow rates.

Manufactured in the UK this heavy duty, high temperature tank pump incorporates thermal overload protection and a high level alarm switch.



PH-5L-HW



IN SITU

Part code	Brand	Description	Max head*	Max flow	Temp	Dimensions mm (HxWxD)	Discharge Size (inch)
PH-5L-HW	Pump House	High Temperature & Pressure Relief Pump	8m / 20m	32 LPM (1920LPH)	100°C	350x190x260	15mm

\* Max Heads - 8 metre for flow rates up to 25 Litres per minute / 20 metre for flow rates of 5 Litres per minute



## SUBMERSIBLE DRAINAGE BASEMENT PUMP

Little Giant have the perfect pump solution for the removal of clean, non-aggressive residual water. This pump can be used to assist with the extraction of flood water in properties with basements and can be used with a sump to provide the removal of water below floor level.



Part code	Brand	Description	Max head	Max flow	Dimensions mm (HxWxD)	Discharge size	Weight
6E-CIA-SFS	Little Giant	Drainage Basement Pump	4.6m	9600LPH	258x269x213	38mm (1/2)	12.7kg

## SWIMMING POOL COVER PUMP - APCP-1700

The Little Giant APCP pool cover pump helps safeguard and protect the pool cover from prolonged accumulation of rain or melting snow. This automatic version is certified for use on pool covers, all of which can attach to a standard garden hose for easy water removal.

It removes standing water from pool covers and is ideal for household water transfer applications.

APCP-1700



Part code	Brand	Description	Max head	Max flow	Dimensions mm (HxWxD)	Discharge size	Weight
APCP-1700	Little Giant	Automatic Pool Cover Pump	6.6m	6814LPH	210x305x305	1" FNPT	5.4kg

## SOAKAWAY AND CONDENSATE BYPASS VALVE



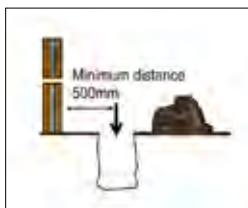
### SOAKAWAY KIT FOR CONDENSING BOILERS

'Soak up' boiler condensate with our soakaway. Where a suitable gravity drain is not available the soakaway can be used in conjunction with 10mm lime chippings.

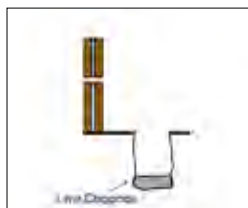
Compatible with the following pipe sizes: 22mm (3/4") overflow, 32mm (1-1/4") and 40mm (1-1/2").



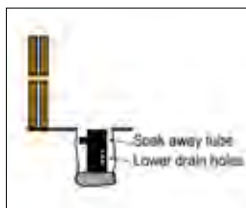
TOP VIEW



1. DIG HOLE (MIN DEPTH) 400MM X 300MM IN DIAMETER, AT LEAST 500MM FROM THE WALL



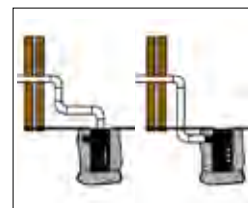
2. FILL THE BOTTOM OF THE HOLE WITH 100MM DEPTH OF LIME CHIPPINGS.



3. INSERT THE SOAKAWAY TUBE WITH THE LOWER DRAIN HOLES FACING AWAY FROM THE PROPERTY.



4. FILL THE REMAINING PART OF THE HOLE AND TUBE WITH LIME CHIPPINGS



5. FEED THE PIPEWORK EITHER INTO THE TOP OR THROUGH THE SIDE OF THE SOAKAWAY.

Part code	Description	Height	Diameter	Inlet (inch)
SOAK1	Soakaway Kit for Condensing Boilers	300mm	110mm	22mm (3/4) 32mm (1-1/4) 40mm (1-1/2)

### FREEZING CONDENSATE SOLUTION BOILER BUOY CONDENSATE BYPASS VALVE

Low cost, easy to install solution to bypass freezing pipes. Cutting a condensate pipe due to freezing has been common place over winter periods. The BB-1 Boiler Buoy condensate bypass valve is a solution that has been designed to be fitted during install, emergency call outs or whilst performing annual service visits.

A red float which when visible, indicates that the condensate pipe has a blockage or may be frozen.

The built in tap allows the householder to drain the condensate away safely and ensures that the heating of the property can continue to work.



Part code	Description	Height	Diameter	Outlet	Hose Length
BB-1	Boiler Buoy - Condensate Bypass Valve	115mm	29mm	9.5mm	1.5m

## ACCESSORIES

DiversiTech International stock a range of adaptors,, connectors, clamps, clips and hoses to connect the unit and pump.



Part code	Description	Pump type application	Pack QTY
adap-1	Condensate drain adaptor - 22mm to 9.5mm (7/8 to 3/8")	Tank pump - 9.5mm (3/8") outlet	Single
ph-pump-nrv	Non-return check valve - 9.5mm (3/8")	Tank pump - 9.5mm (3/8") outlet	Single
anti-syph-kit	Anti Syphon Kit - 9.5mm (3/8")	Tank pump - 9.5mm (3/8") outlet	Single
701-032	Hose connector - Nylon 9.5mm (3/8")	Tank pump - 9.5mm (3/8") outlet	2-pack
b-6h	Hose clamp - 6.3mm - 9.5mm (1/4 - 3/8")	All pumps	Single
927033	Hose clip - 9.5mm (3/8")	Tank pump - 9.5mm (3/8") outlet	Single
rvt-3/8	Condensate drain hose - 9.5mm (3/8")	Tabnk pump / hot water pumps	30m

## SELF-SEALING PIPE ADAPTOR

The self-sealing adaptor is used to form a connection between condensate hose and a soil & vent pipe. Drill a 13mm hole (for SVA-3) or a 10mm hole (for SVA-6), insert and twist in to seal the connection.



Part code	Description	Pack QTY
SVA-3	Self-sealing pipe adaptor - 6mm & 9.5mm (1/4 & 3/8) hose to soil & vent pipe	3 Pack
SV-ADAPTOR	Self-sealing pipe adaptor - 6mm & 9.5mm (1/4 & 3/8) hose to soil & vent pipe	Single
SVA-6-3	Self-sealing pipe adaptor - 6mm (1/4) hose to soil & vent pipe	3 pack
SV-ADAPTOR-6	Self-sealing pipe adaptor - 6mm (1/4) hose to soil & vent pipe	Single

## AUDIBLE ALARM

This audible alarm can be wired into all pumps with a high level switch.



Part code	Description	Pack QTY
audible-alarm	Audible alarm for all pumps with a high-level switch	Single

PORTABLES



A energy efficiency

PORTABLES - COOL ONLY & HEAT / COOL PUMP

The portable air conditioners are suitable for offices, computer rooms and light commercial use. The cooling only model is ideal for cooling flats, conservatories or loft conversions during hot summer months. The heat and cool model can be used as an energy efficient form of heating along with cooling. The units come with a hose, tray, remote control and wall kit. Spare parts are available upon request - please enquire for more details.

PAC-C-12-R290



Part code	Description	Cool capacity Btu/kW	Heat capacity Btu/kW	Watts	Amps	Air flow volume	EER	COP	Sound power level dBA
PAC-C-12-R290	Portable (cooling)	12,000 / 3.5	N/A	1350	5.9	420m <sup>3</sup> /h	2.6	N/A	56
PAC-H-12-R290	Portable (heat pump)	12,000 / 3.5	N/A	1350	5.9	420m <sup>3</sup> /h	2.6	N/A	56

Part code	Description	Height	Width	Depth	Weight	Hose length	Refrigerant	Cooling area
PAC-C-12-R290	Portable (cooling)	730mm	485mm	360mm	28kg	1.5m	R290	25-30m <sup>2</sup>
PAC-H-12-R290	Portable (heat pump)	730mm	485mm	360mm	28kg	1.5m	R290	25-30m <sup>2</sup>

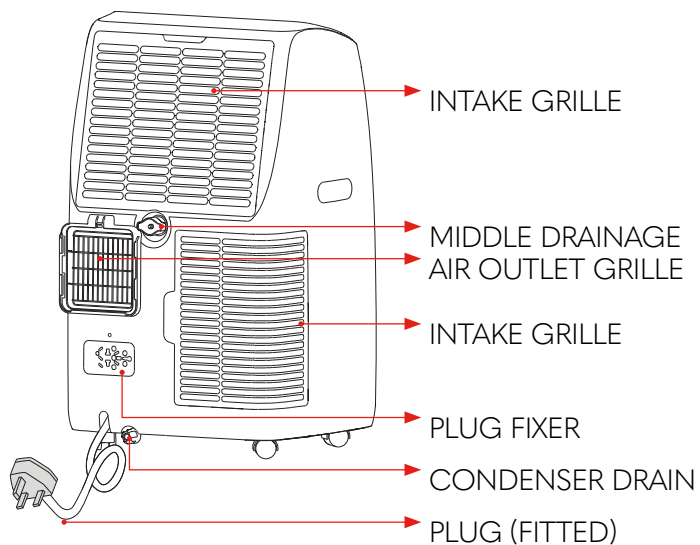
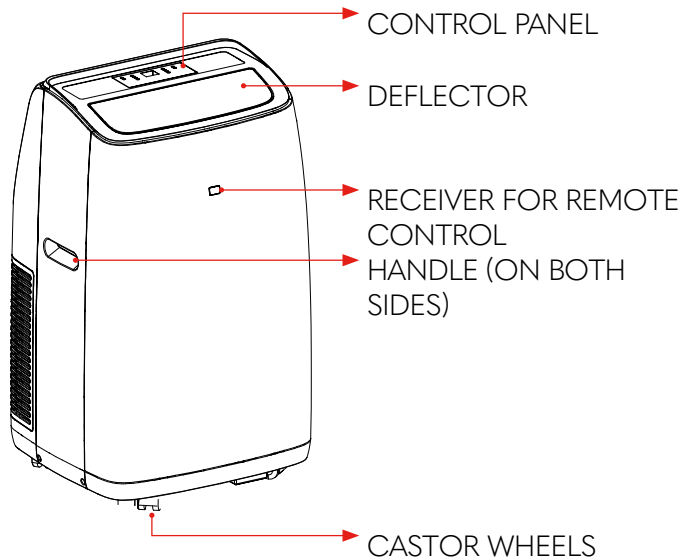
PAC-IHP-12-BLK

The all new PORTABLE AC (heat & cool) is now available in a sleek black finish. This unit has a A++ cooling energy class rating, and when winter arrives, the heating output has an A+++ heating energy class.

- NEW black colour
- A++ cooling energy class rating
- A+++ heating energy class rating
- Uses 25% less power than non inverter unit
- R290 refrigerant



<b>Part code</b>	PAC-IHP-12-BLK-A++
<b>power supply</b>	220-240V
<b>Hz</b>	50
<b>water tank volume</b>	1.2L
<b>cooling capacity</b>	3500W
<b>cooling energy class</b>	A++
<b>heating capacity</b>	2930W
<b>heating energy class</b>	A+++
<b>moisture removal</b>	1.6 LPH
<b>SOUND</b>	64/63/62 dB(A) (58 dB(A) sleep)
<b>refrigerant</b>	R290
<b>charge</b>	0.23kg
<b>gwp</b>	3
<b>CO2</b>	0.00069
<b>suction pressure</b>	1.2 Mpa
<b>discharge pressure</b>	2.3 Mpa
<b>rated power</b>	1100W
<b>rated current</b>	6.8A
<b>Weight</b>	31.1kg
<b>gross weight</b>	35.3kg
<b>dimensions</b>	450 (W) x 396 (D) x 745 (H)mm
<b>packing dimensions</b>	499 (W) x 459 (D) x 880 (H)mm
<b>amps</b>	0.7A



## TORCHES



### CLIPLIGHT - PIVOT™ TORCHES

The Pivot™ range has a 360 degree swivel hook and is magnetic at the base and back. Available in colours Yellow/Black and Camo. All models are supplied with three AAA batteries.



Part code	Description	Colour	Lumens	UOM	Master QTY
111114	Pivot - 5 LED Work Light	Yellow/Black	240	Each	Pack of 9
111115	Pivot Mini - 18 LED Front Light / 3 LED Top	Yellow/Black	120	Each	Pack of 12
111117	Pivot Mini - 18 LED Front Light / 3 LED Top	Camo	120	Each	Pack of 12
24-458	Pivot 33 - 28 LED Front Light / 5 LED Top	Yellow/Black	160	Each	Pack of 9
24-460	Pivot 33 - 28 LED Front Light / 5 LED Top	Camo	160	Each	Pack of 9

## TAPES



### ABRASIVE CLOTH

A high quality aluminium oxide 120 grit abrasive cloth, that can be used wet or dry to thoroughly clean steel and copper tubing.



Part code	Description	UOM	Master Qty
SC-10	Abrasive Cloth - 120 Grit - 1-1/2" x 10 yards	1	1

### GRIP-CUT CLOTH

A 180 grit open mesh sand screen cloth with aluminium oxide bonding, that is 100% waterproof. Can be used by hand or with portable tools and is most effective where clogging would be a problem such as soft materials.



Part code	Description	UOM	Master Qty
SCM-5	Grip- Cut Open Mesh Sand Screen Cloth - 1-1/2" x 5 yards	1	1

### BRAZE BARRIER MATS

This flame barrier drop cloth withstands temperatures to (1600°C) 3000°F No asbestos. Protects walls, floors, equipment, components and adjacent surfaces from torch flames when soldering, brazing or welding.



Part code	Description	UOM	Master Qty
16500	Plain Braze Barrier Mat 18" x 18"	1	1
16510	Keyhole Braze Barrier Mat - 18" x 18"	1	1

## SWITCHES AND ISOLATORS

### FUSED SPUR SWITCHES

Part code	Description
X-FSBBMC	Fused Spur Metal Clad - with Back Box
X-FSNBBMC	Fused Spur Metal Clad - with Back Box & Neon
X-FS	Fused Spur Plastic - without neon
X-FSN	Fused Spur Plastic - with neon
X-BBSM-25	Back Box Surface Mount - 25mm
X-BBSM-35	Back Box Surface Mount - 35mm
X-BBSM26-25	Back Box 2 Gang - 25mm
X-BBSM2G-35	Back Box 2 Gang - 35mm
X-BSPS-10A	Plug Socket - 10 Amp
X-2GSW2W-10A	Switch 2 Gang - 10 Amp
X-3GSW2W-10A	Switch 3 Gang - 10 Amp
X-1GDPSW-13A	Switch 1 Gang - 13 Amp
X-2GDPSW-13A	Switch 2 Gang - 13 Amp
X-DPSW-20A	Switch Double Pole - 20 Amp
X-PT	Plug Top - 13 Amp



FUSED SPUR METAL



FUSED SPUR PLASTIC

## SERVICE AND MAINTENANCE

### DRAINGUN

Blocked drain line - no problem with our DrainGun™. This lightweight, portable tool is designed to unblock condensate drain lines and other pipework instantly.

Simply insert a CO<sup>2</sup> cartridge in to the DrainGun and with a press of the trigger, SWOOSH, 800 psi of food grade CO<sup>2</sup> blows the blockage out.



Part code	Description	Size
GG-1	Drain Gun Line Cleaner	Single Pack
GGC-6	Drain Gun - Pack of 6, CO <sup>2</sup> Cartridges	Pack of 6
GG-1A	Drain Gun - Adaptor Kit - for larger tubes, oil lines and 90 degree angles	3 adaptors
GG-1H	Drain Gun - Hose Assembly	Single Pack

### VORTEX MAP-X BRAZING GAS

Map-X burns hotter than Vortex Propane, which makes it ideal for high-temperature applications. Sold in 400g non-refillable canister. Vortex gases are designed for use with any of our Vortex range of brazing torches.



Part code	Description	Size
VG1	Vortex Map-X gas cannister	400g

## ACCESSORIES



### EXPANDING FOAM SEALANT

A one component closed-cell expanding polyurethane foam sealant that is tack free in 20 minutes. Can be painted to prevent UV damage after 12 hours of drying time. Used to seal around doors, windows, pipes, ducts and vents - in fact, virtually anywhere.



Part code	Description	UOM	Master Qty
FOAM-152760	Gap filler expanding foam - 300ml	Each	12
FOAM-135234	Gap filler expanding foam - 600ml	Each	12

### SILICONE SEALANTS

Available in clear or white, DiversiTech silicone sealants are 100% food grade and can be used in applications for continuous use up to 232°C. It is UV and water resistant and has long term flexibility.



Part code	Description	UOM	Master Qty
7-4000	Clear Silicone Sealant - 305ml	Each	12
7-4100	White Silicone Sealant - 305ml	Each	12

### DIVERSI-GUM SEALING COMPOUND

Diversi-Gum is a non-hardening, non-corrosive sealing compound that is immediately paintable and has a temperature usage range between -4°C and 49°C. It is ideal for sealing openings through walls from pipework.



Part code	Description	UOM	Master Qty
6-202-1	Diversi-Gum Sealing compound 450g slug	Each	24
6-202-2	Diversi-Gum Sealing compound 900g slug	Each	20

### DIVERSI-BOND

Diversi-Bond is a versatile, strong elastic adhesive and sealant for use in bonding and sealing applications in the construction industry. Ideal for air conditioning, plumbing and ventilation sectors where a tough flexible rubber joint and a powerful elastic adhesive bond is required.

- Waterproof and UV-stable
- Expands and contracts with temperature variants (-40°C - +100°C)
- Long-lasting protection against moisture ingress
- Solvent and isocyanate free



Part code	Description	Size	Colour
DIVERSI-BOND	Sealant adhesive for insulation	290ml	Black

## COOL-WELD™ HEAT BARRIER SPRAY

Cool-Weld™ is a spray on gel heat shield for soldering, sweating and welding. Ideal for use on filter driers, pipes, valves, sheet metals, etc. Can be used on porous surfaces such as fabrics or drywall. As long as there is some Cool-Weld™ present the surface will resist charring.



Part code	Description	UOM	Master Qty
COOLWELD-32	Cool-Weld Heat Barrier Spray - 32oz with spray top	Each	12

## TELESCOPIC INSPECTION MIRRORS

Fast, accurate visual inspection of hidden areas with an almost limitless number of positions. Double ball joint links swivel mirrors for viewing 360 degrees. Precision engineered links are made from tempered spring steel to withstand the stresses of constant repositioning. Moves freely and holds in the desired position.



Part code	Description	Qty
M-1	Mirror 1-1/4" circular - extends 32mm - 463mm ( 6-1/4" to 18-1/4")	1
M-2	Mirror 57mm (2-1/4") circular - extends 254mm - 355mm (10" to 14" )	1
M-3	Mirror 54mm x 183mm (2-1/8" x 3-1/2") rectangular - extends 285mm - 387mm (11-1/4" to 15-1/4" )	1
M-4	Mirror 22mm ( 7/8") Circular - extends 165mm (6 -1/2")	1
M-5	Mirror 25mm x 50mm (1" x 2") Oval - extends 191mm (8-1/2")	1

## WYPALL CLOTHS

Heavy duty towels that absorb grease, oil, water and solvents from floors, hands, parts, tools and machinery.



Part code	Description	UOM	Master Qty
5-05790	WypAll Plus Towels - White	Each	Box of 9

## PLASTIC PIPE FITTINGS



### STRAP ON BOSS

Using a Strap On Boss allows you to add condensate drain pipe to a soil and vent pipe. For adding a waste connection into an existing PVCu and cast iron soil pipe. For use with 32mm or 40mm pipes. Must be solvent welded into position.



Part code	Description	Colour	Quantity
PP-SOBOSS-110-G-32	Strap On Boss - 110mm Pipe with 32mm (1-1/4") Rubber	GREY	1
PP-SOBOSS-110-G-40	Strap On Boss - 110mm Pipe with 40mm (1-1/2") Rubber	GREY	1
PP-SOBOSS-110-B-32	Strap On Boss - 110mm Pipe with 32mm (1-1/4") Rubber	BLACK	1
PP-SOBOSS-110-B-40	Strap On Boss - 110mm Pipe with 40mm (1-1/2") Rubber	BLACK	1
X-PVCU-SOBSC-110MM	Strap On Boss - 110mm PVCU		10

### PVC PIPES

PVC-U - ELBOW 3/4" 90 DEGREE



PVC-U - 3/4" T PIECE



PVC-U - 3/4" SOCKET



PVC-U - 3/4" MACLOW CLIPS



Part code 3/4"	Part code 1"	Part code 1-1/4"	Description	Quantity
X-PVCU-3/4E-45		X-PVCU-1-1/4E-45	PVCU - Elbow - 45 Degree	10
X-PVCU-3/4-45T		X-PVCU-1-1/4-45T	PVCU - 45 Degree T	10
X-PVCU-3/4E-90	X-PVCU-1E-90	X-PVCU-1-1/4E-90	PVCU - Elbow - 90 Degree	10
X-PVCU-3/4-MAC	X-PVCU-1-MAC	X-PVCU-1-1/4-MAC	PVCU - Maclow Clips	10
X-PVCU-3/4-EC			PVCU - End Cap	10
X-PVCU-3/4P-3M	X-PVCU-1P-3M	X-PVCU-1-1/4-3M	PVCU - Pipe - 3 Metre Length	10
X-PVCU-3/4-SOC	X-PVCU-1-SOC	X-PVCU-1-1/4-SOC	PVCU - Socket	10
X-PVCU-3/4-CAP		X-PVCU-1-1/4-CAP	PVCU - Threaded Cap	10
X-PVCU-3/4-PIN		X-PVCU-1-1/4-PIN	PVCU - Pin / Barrel	10
X-PVCU-3/4-R		X-PVCU-1-1/4-R	PVCU - Reducer	10
X-PVCU-3/4-RE		X-PVCU-1-1/4-RE	PVCU - Rodding Eye	10
X-PVCU-3/4-TP	X-PVCU-1TP	X-PVCU-1-1/4-TP	PVCU - T Piece	10

## PLASTIC PIPE FITTINGS



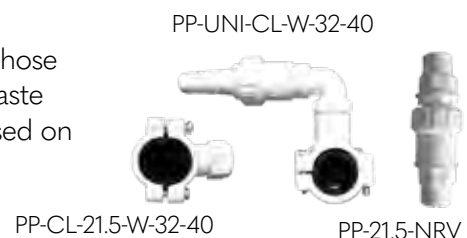
Code White	Code Black	Description	Pipe Size (mm)	Quantity
PP-90EL-21.5-W	PP-90EL-21.5-B	Plastic Pipe - 90 Degree Elbow	21.5mm	Pack of 10
PP-45EL-21.5-W	PP-45EL-21.5-B	Plastic Pipe - 45 Degree Elbow	21.5mm	Pack of 10
PP-CON-21.5-W	PP-CON-21.5-B	Plastic Pipe - Straight Connector	21.5mm	Pack of 10
PP-T-21.5-W	PP-T-21.5-B	Plastic Pipe - T Connector	21.5mm	Pack of 10
PP-PIPE-21.5-W	PP-PIPE-21.5-B	Plastic Pipe	21.5mm	3 metre

"Code White"	"Code Black"	"Code Grey"	Description	"Pipe Size (mm)"	Quantity
PP-CL-15-W			Plastic Pipe Clip	15mm	Pack of 100
PP-CL-22-W	PP-CL-22-B100		Plastic Pipe Clip	22mm	Pack of 100
PP-CL-28-W			Plastic Pipe Clip	28mm	Pack of 100
PP-CL-32-W	PP-CL-32-B	PP-CL-32-G	Plastic Pipe Clip	32mm	Pack of 10
PP-CL-40-W	PP-CL-40-B	PP-CL-40-G	Plastic Pipe Clip	40mm	Pack of 10

Code	Description	Size	Master QTY
PVCC250	Solvent Cement	250ml	20

## PLASTIC PIPE CLAMPS / NON-RETURN VALVES

Our plastic pipe clamps are designed to connect overflow or waste hose pipe to an existing 32mm (1-1/4") or 40mm (1-1/2") pipe. To avoid waste water flowing back up the pipework our non-return valves can be used on overflow pipe or waste hose pipe.



Part code	Description	Quantity
PP-CL-21.5-W-32-40	Pipe Clamp Kit - 21.5mm overflow to 32mm (1/1/4") and 40mm (1-1/2")	1
PP-UNI-CL-W-32-40	Pipe Clamp - Hose Connector 32mm (1-1/4") and 40mm (1-1/2")	1
PP-21.5-NRV	Non-Return Valve - for 21.5mm overflow pipe	1
PP-UNI-NRV	Non-Return Valve - with Hose Fitting	1

## PLASTIC PIPE FITTINGS



### STRAP ON BOSS

Using a Strap On Boss allows you to add condensate drain pipe to a soil and vent pipe. For adding a waste connection into an existing PVCu and cast iron soil pipe. For use with 32mm or 40mm pipes. Must be solvent welded into position.



Part code	Description	Colour	Quantity
PP-SOBOSS-110-G-32	Strap On Boss - 110mm Pipe with 32mm (1-1/4") Rubber	GREY	1
PP-SOBOSS-110-G-40	Strap On Boss - 110mm Pipe with 40mm (1-1/2") Rubber	GREY	1
PP-SOBOSS-110-B-32	Strap On Boss - 110mm Pipe with 32mm (1-1/4") Rubber	BLACK	1
PP-SOBOSS-110-B-40	Strap On Boss - 110mm Pipe with 40mm (1-1/2") Rubber	BLACK	1
X-PVCU-SOBSC-110MM	Strap On Boss - 110mm PVCU		10

### PVC PIPES

PVC-U - ELBOW 3/4" 90 DEGREE



PVC-U - 3/4" T PIECE



PVC-U - 3/4" SOCKET



PVC-U - 3/4" MACLOW CLIPS



Part code 3/4"	Part code 1"	Part code 1-1/4"	Description	Quantity
X-PVCU-3/4E-45		X-PVCU-1-1/4E-45	PVCU - Elbow - 45 Degree	10
X-PVCU-3/4-45T		X-PVCU-1-1/4-45T	PVCU - 45 Degree T	10
X-PVCU-3/4E-90	X-PVCU-1E-90	X-PVCU-1-1/4E-90	PVCU - Elbow - 90 Degree	10
X-PVCU-3/4-MAC	X-PVCU-1-MAC	X-PVCU-1-1/4-MAC	PVCU - Maclow Clips	10
X-PVCU-3/4-EC			PVCU - End Cap	10
X-PVCU-3/4P-3M	X-PVCU-1P-3M	X-PVCU-1-1/4-3M	PVCU - Pipe - 3 Metre Length	10
X-PVCU-3/4-SOC	X-PVCU-1-SOC	X-PVCU-1-1/4-SOC	PVCU - Socket	10
X-PVCU-3/4-CAP		X-PVCU-1-1/4-CAP	PVCU - Threaded Cap	10
X-PVCU-3/4-PIN		X-PVCU-1-1/4-PIN	PVCU - Pin / Barrel	10
X-PVCU-3/4-R		X-PVCU-1-1/4-R	PVCU - Reducer	10
X-PVCU-3/4-RE		X-PVCU-1-1/4-RE	PVCU - Rodding Eye	10
X-PVCU-3/4-TP	X-PVCU-1TP	X-PVCU-1-1/4-TP	PVCU - T Piece	10

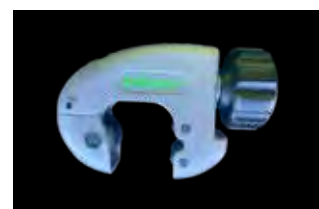
# A SELECTION OF TOOLS FOR THE INSTALLER

TOOLS FOR THE INSTALLER



## TUBE CUTTERS

1885381	Tube Cutter 1/8" - 5/8"
1885382	Tube Cutter 1/8" - 1"
1885383	Tube Cutter 1/8" - 1-1/8"
1885384	Tube Cutter 1/8" - 1-3/8"
1885385	Tube Cutter 1/8" - 3/4"



## PLASTIC TUBE CUTTERS

1885388	Plastic Tube Cutter 1-5/6" Max OD
1885393	Ratch Plastic Tube Cutter 1-5/8" Max OD
1885395	Ratch Plastic Tube Cutter 1-3/8" Max OD



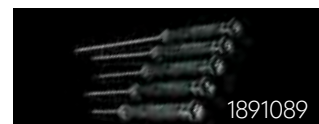
## SCREWDRIVERS

1891355	1/4" x 1.5" RD SH Keystone Screwdriver. 3.5" Long
1891352	1/4" x 4" Shaft RD SH Keystone Screwdriver. 8, 1/8" Long
1891356	1/4" x 4" Shaft RD SH Keystone Screwdriver. 8" Long
1891358	5/16" x 6" Shaft RD SH Keystone Screwdriver. 10.5" Long
1891286	3/8" x 8" Shaft RD SH Keystone Screwdriver. 12.5" Long
1891287	3/16" x 3" Shaft RD SH Keystone Screwdriver. 6.5" Long
1891288	3/16" x 6" Shaft RD SH Keystone Screwdriver. 9.5" Long
1891289	1/4" x 6" Shaft RD SH Keystone Screwdriver. 10-1/4" Long
1891397	Terminal Block Screwdriver 4"
1891290	#1PH Phillips 3" Shaft
1891391	#2PH Phillips Tip 1.5" Shaft RD SH
1891392	#2PH Phillips Tip 4" Shaft RD SH
1891393	#2PH Phillips Tip 7" Shaft RD SH
1891394	#3 Phillips Tip 6" Shaft RD SH



## SCREWDRIVER SETS

1891089	Precision Screwdriver Set
1891087	5pc Screwdriver Set
1891088	7pc Screwdriver Set



## MULTI-TOOLS

1839053	9 In One Multi-Tool 7-1/4" Long
1937819	9 In One Multi-Tool 7-1/4" Long
1891351	MTS STUBBY MULTI TOOL
1891259	Ratcheting Multi-Tool 9 In 1



## HEX KEY SETS

1839049	Ball End Imperial 0.5" - 3/8"
1937816	Ball End Metric 1.5mm - 10mm
1839048	Hex Key Folding Set 5/64" - 5/32"
1891472	Hex Key Folding Set (Metric)



## WRENCHES

HIL-1963826	Digital Adjustable Wrench Jaw Torque
1885369	Adjustable Wrench 6"
1885370	Adjustable wrench 8"
1885421	Adjustable Wrench 10"
1885422	Adjustable Wrench 12"



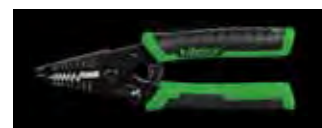
## PLIERS, CUTTERS, CRIMPERS

1890996	Tongue/Groove Pliers 8" Quick Adjust
1890998	Tongue/Groove Pliers 12" Quick Adjust
1885399	Lineman's Pliers 8.5"
1885411	Lineman's Pliers 9.5"
1885397	Long Nose Plier 6"
1885398	Long Nose Plier 8"
1885412	Diagonal Cutting Plier 6"
1885363	Diagonal Cutting Pliers 8"
1885429	Crimping Tool 10"
1937677	Refrigerant Recovery Pliers



## WIRE STRIPPERS

1885424	WS8 8" Wire Strippers
1885426	Wire Stripper 7"
1885427	WS6 6" Wire Strippers



## UTILITY KNIFE

1885433	Folding Handle Utility Knife
---------	------------------------------



**OTHER TOOLS**

HIL-CM35-15-28	A-Frame Bender 15, 22, 28mm
1839052	DBUR 1/4" TO 1-5/8" DEBURRER
1891258	DBURPS POCKET SIZE DEBURRING TOOL
T-100	Fin Comb Set 8. 9. 10. 11. 12. 14mm
M-1	1-1/4" Inch Circular Extendable Mirror 6-1/4" - 18-1/4"
M-3	Rectangular Mirror 2-1/8" x 3-1/2" Extendable 11-1/4" - 15-1/4"
SC-10	120 Grit Cloth Roll 1-1/2" x 30ft
SCM-5	180 Grit Mesh Sand Screen Cloth 1-1/2" x 15ft
AER-B-500	Leak Seek Bubble up Aerosol 500ml
MAP+	Map Gas Cylinder 453g



**TOOL STORAGE**



**TOOL CENTRE BAG**

The Hilmar Tool Center Bag is your total tool storage solution. It includes 24 exterior and interior pockets and three zippered pouches so you can store your tools safely and find them quickly.

EXTRA FEATURES  
CLEAR VINYL ID WINDOW POCKET;  
SHOULDER STRAP; COVER FLAP

THREE ZIPPERED POUCHES AND TWO PADDED SIDE POCKETS PROVIDE SAFE STORAGE FOR YOUR METER.

Part code	Description	Pockets interior	Pockets exterior
1839079	TCB	13; 18 Tool Loops	11

Length	Width	Height	Weight
13-1/2"	8-1/2"	9"	4.5 lbs



**BACKPACK TOOL BAG**

The Hilmar Backpack Tool Bag features 19 exterior and interior pockets. Its sturdy rubber, water-resistant bottom means rain or shine, the contents inside won't be damaged. And while it's spacious enough to hold up to 50 lbs., padded shoulder straps and a back air vent make hauling it a little more comfortable and leave your hands free to safely climb a ladder.

A MANIFOLD METAL LOOP  
2 X PADDED, ZIPPERED SIDE POCKETS

19 EXTERIOR AND INTERIOR POCKETS ALLOW YOU TO STORE TOOLS SAFELY AND FIND THEM QUICKLY.

Part code	Description	Pockets interior	Pockets exterior
1839080	BKB	11	8

Length	Width	Height	Weight
6"	14"	16"	4.5 lbs



# ENGINEER ON CALL

TELEPHONE



DiversiTech.  
Power Park | Thane Road | Nottingham NG7 2AA | United Kingdom  
T: +44(0)115 900 5858 E: sales@diversitech.com W: www.diversitech.global